





10



20

30

440

50

60

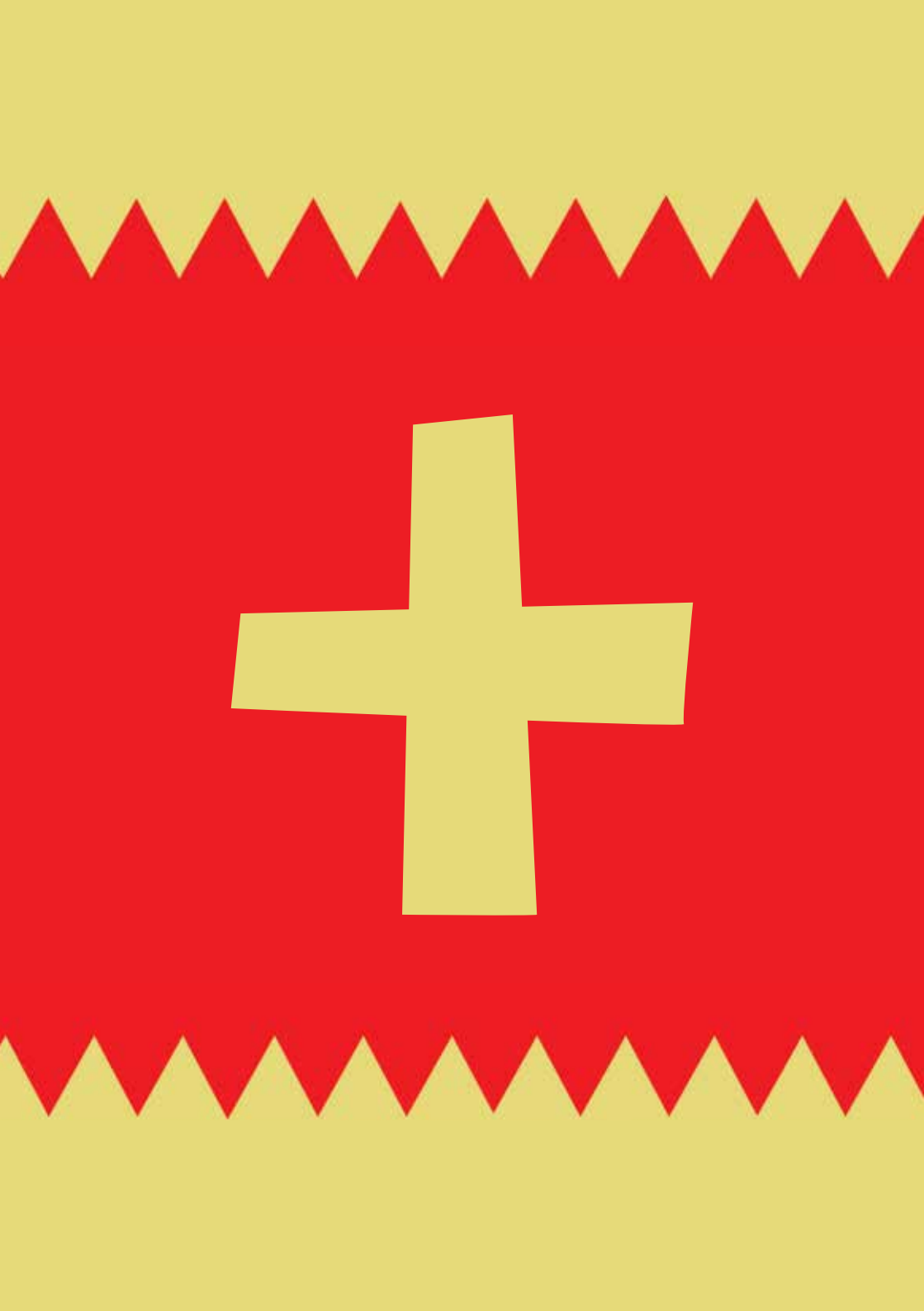
70

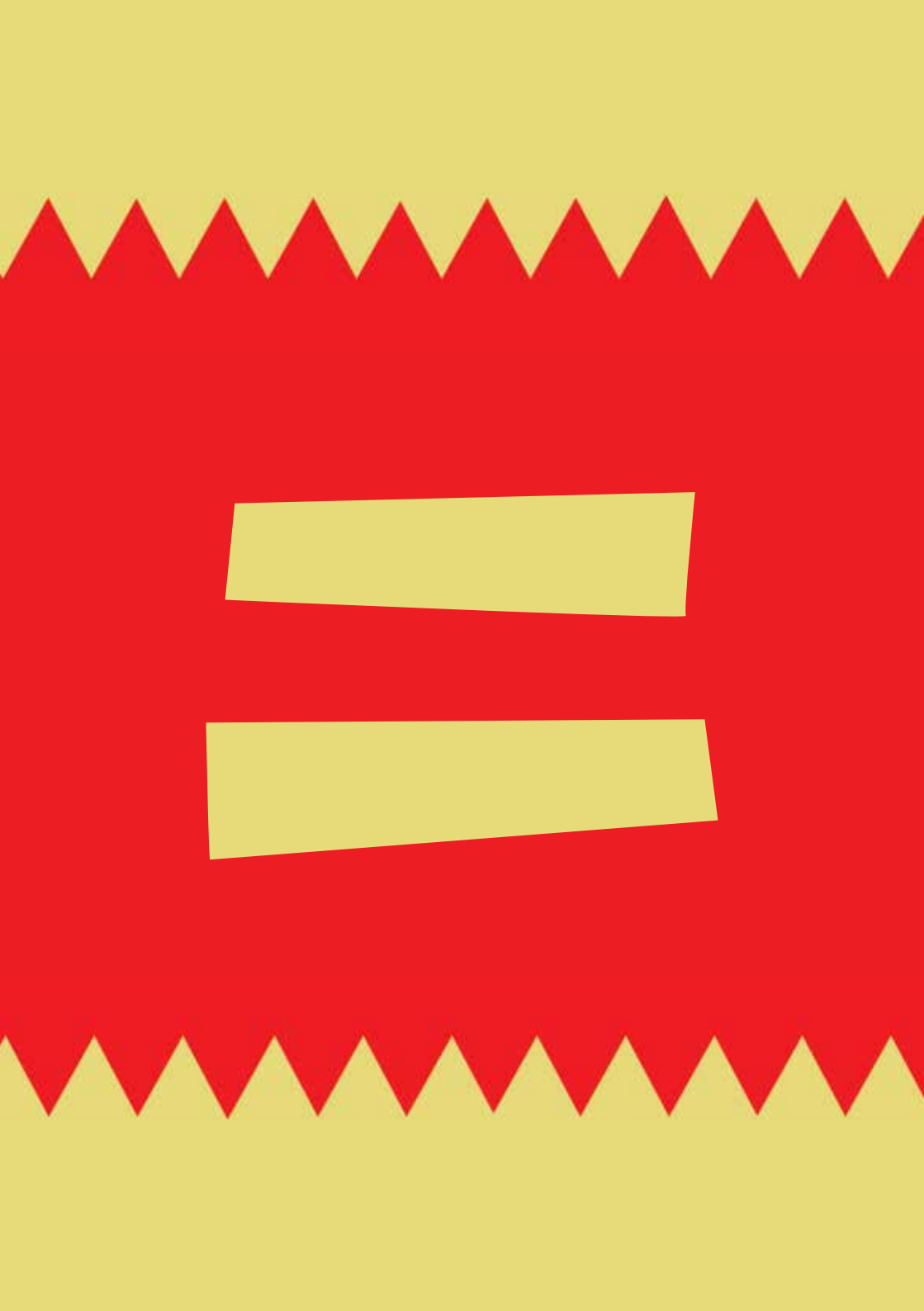
80

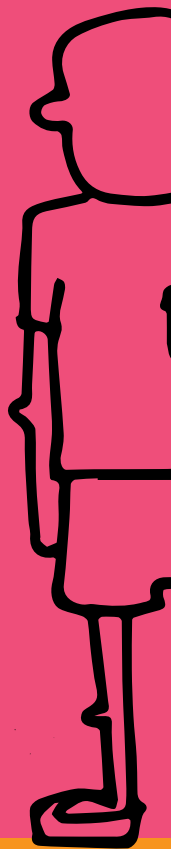
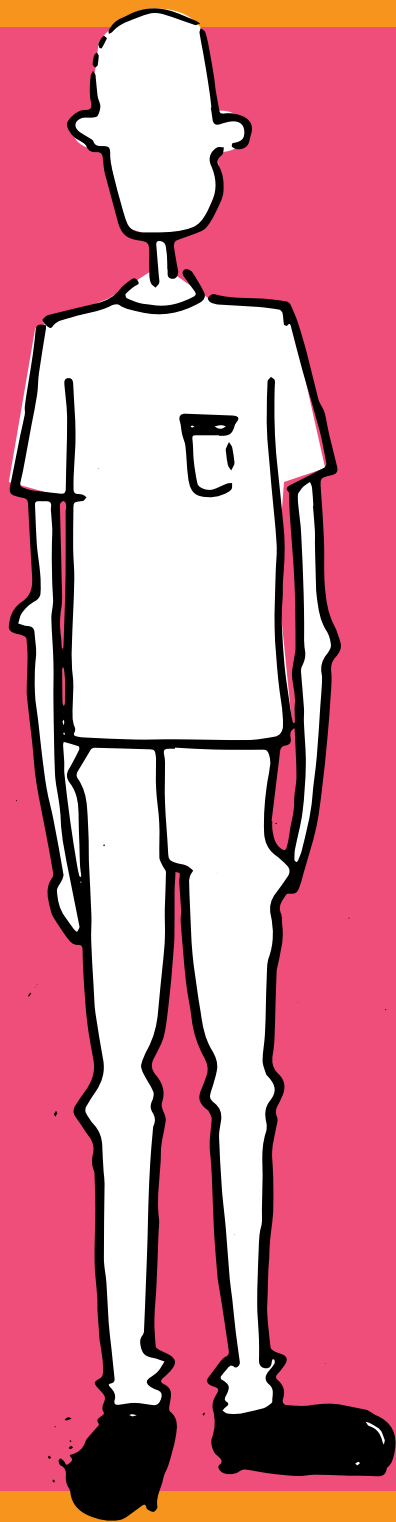
90



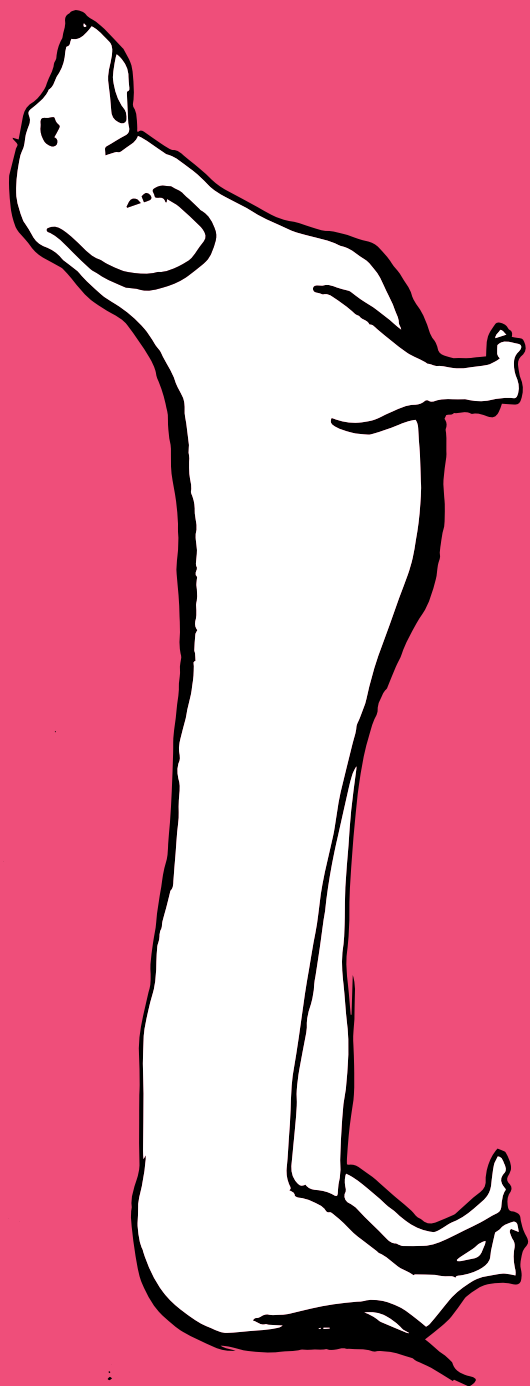
100







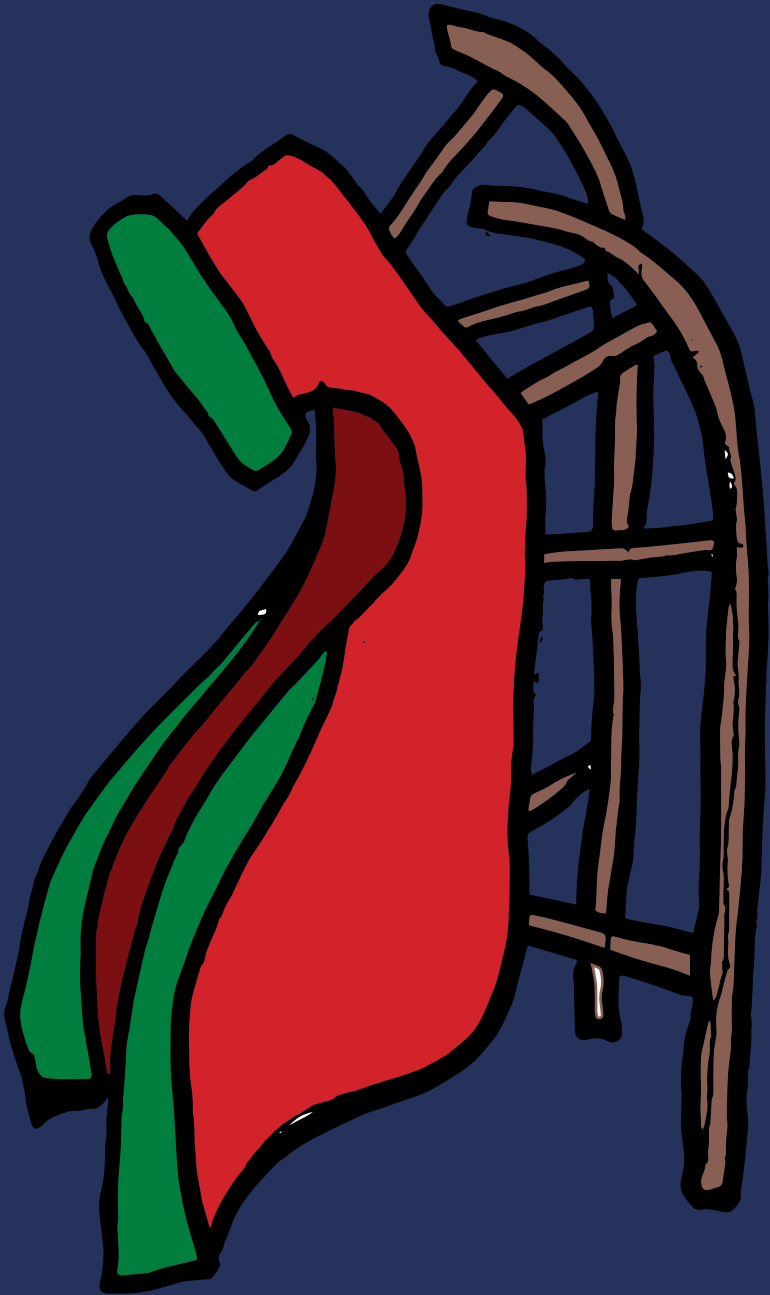


















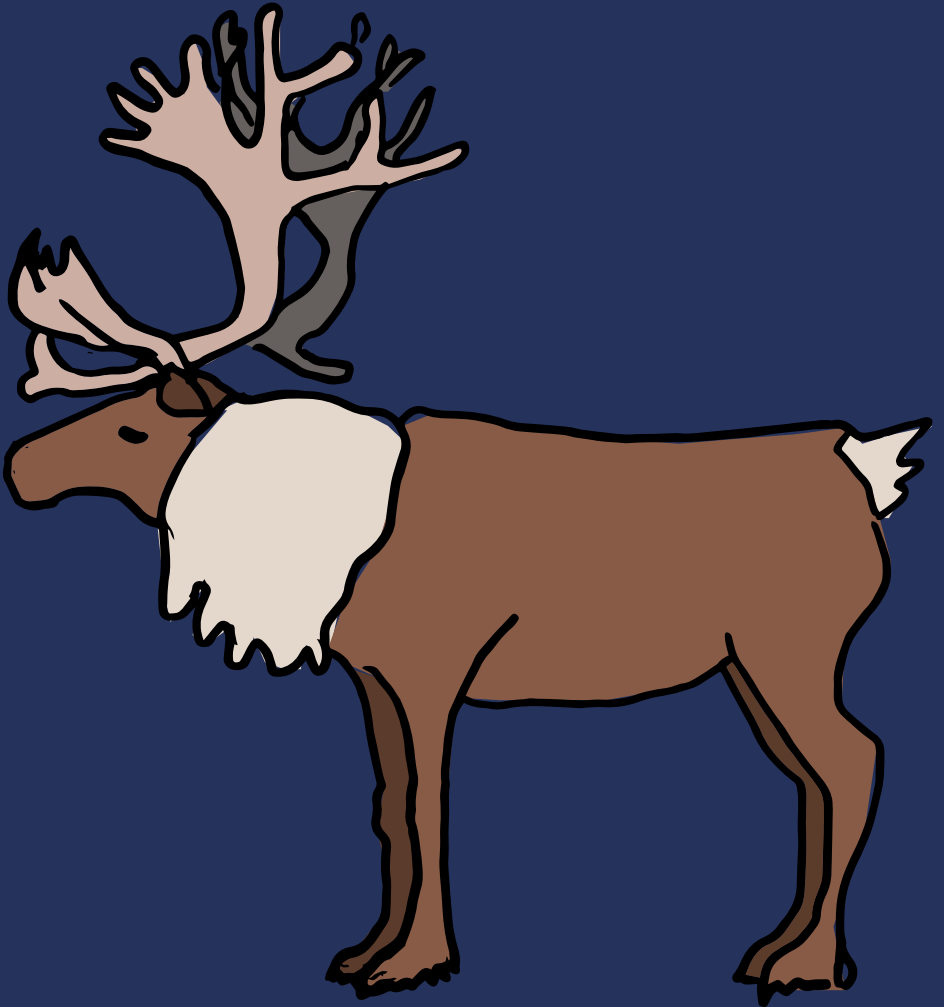


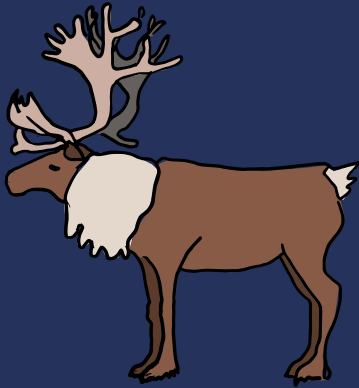
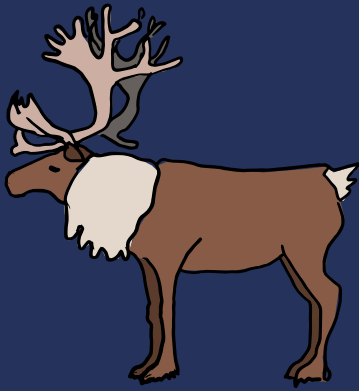


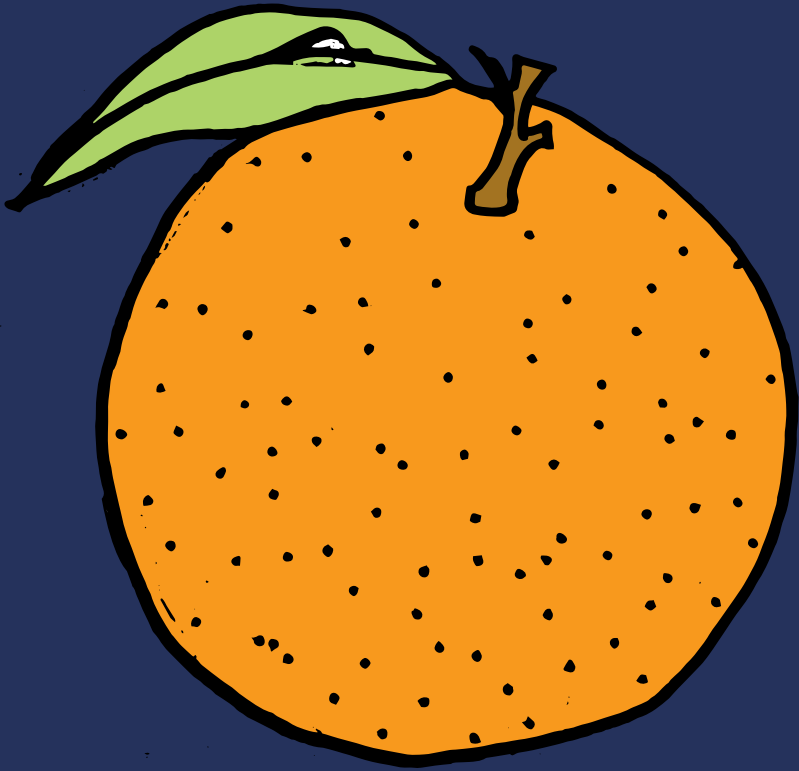


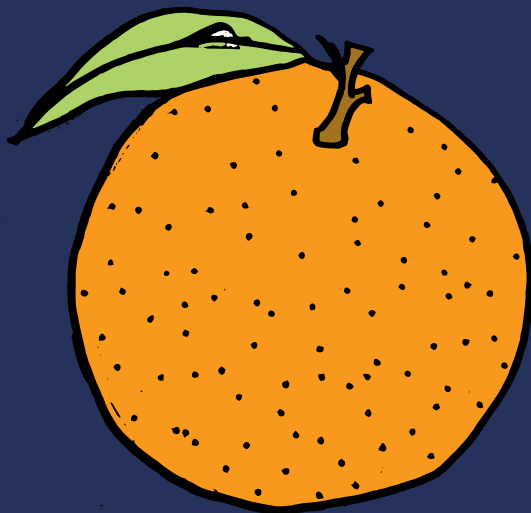
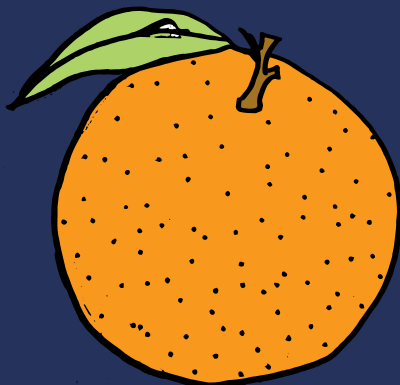
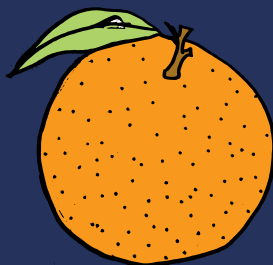
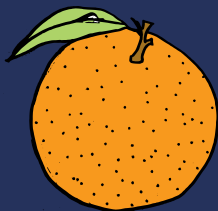




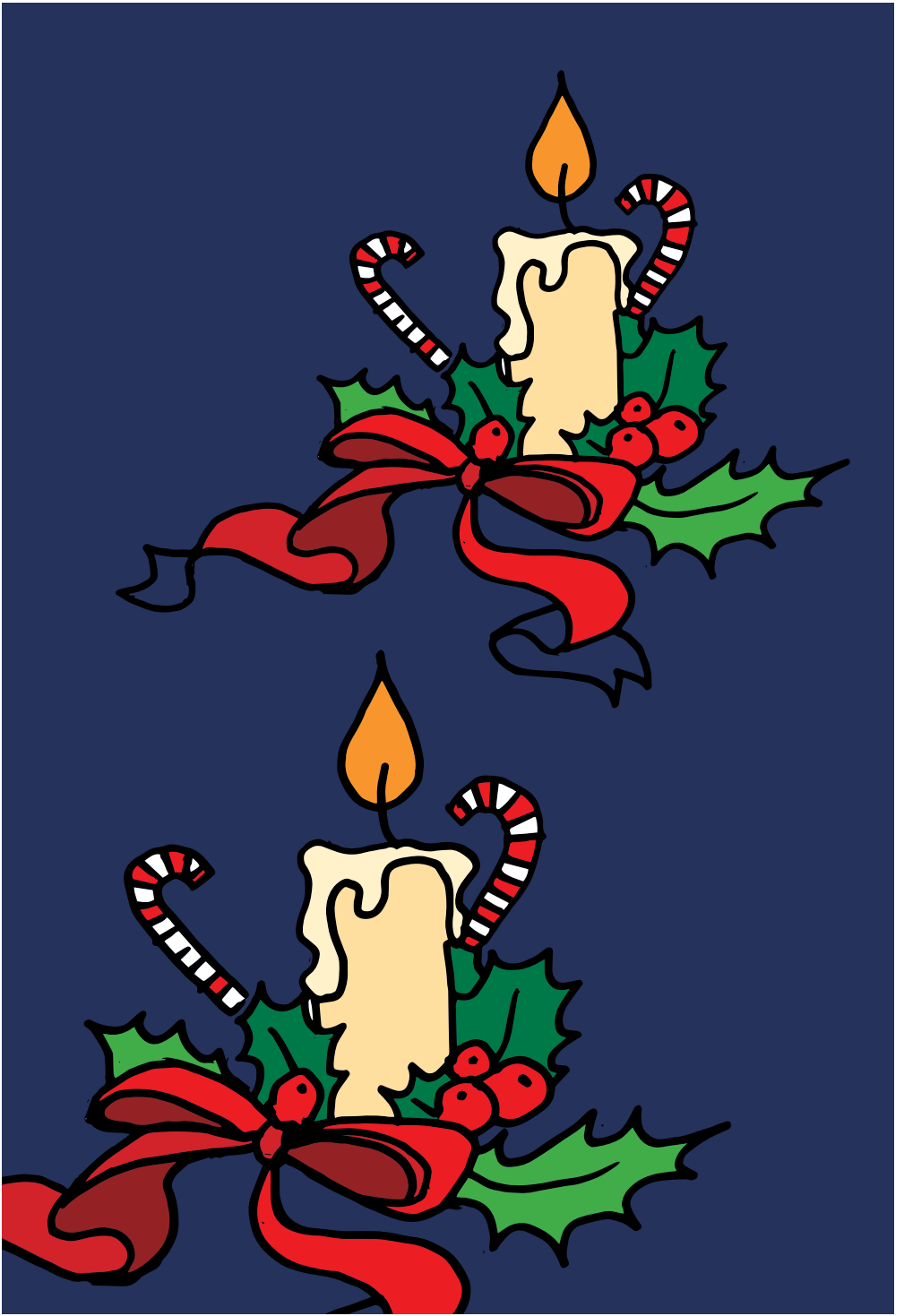




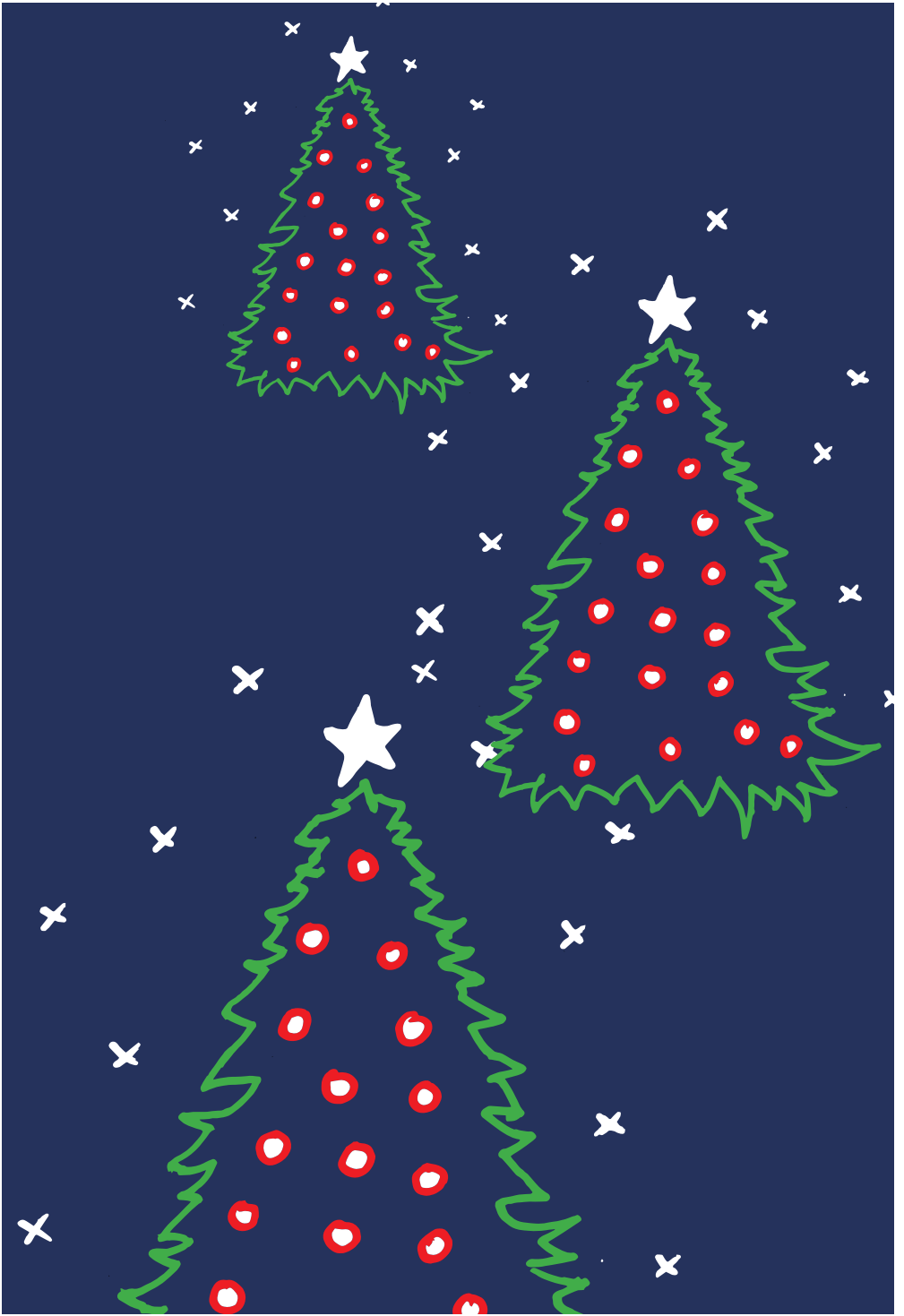






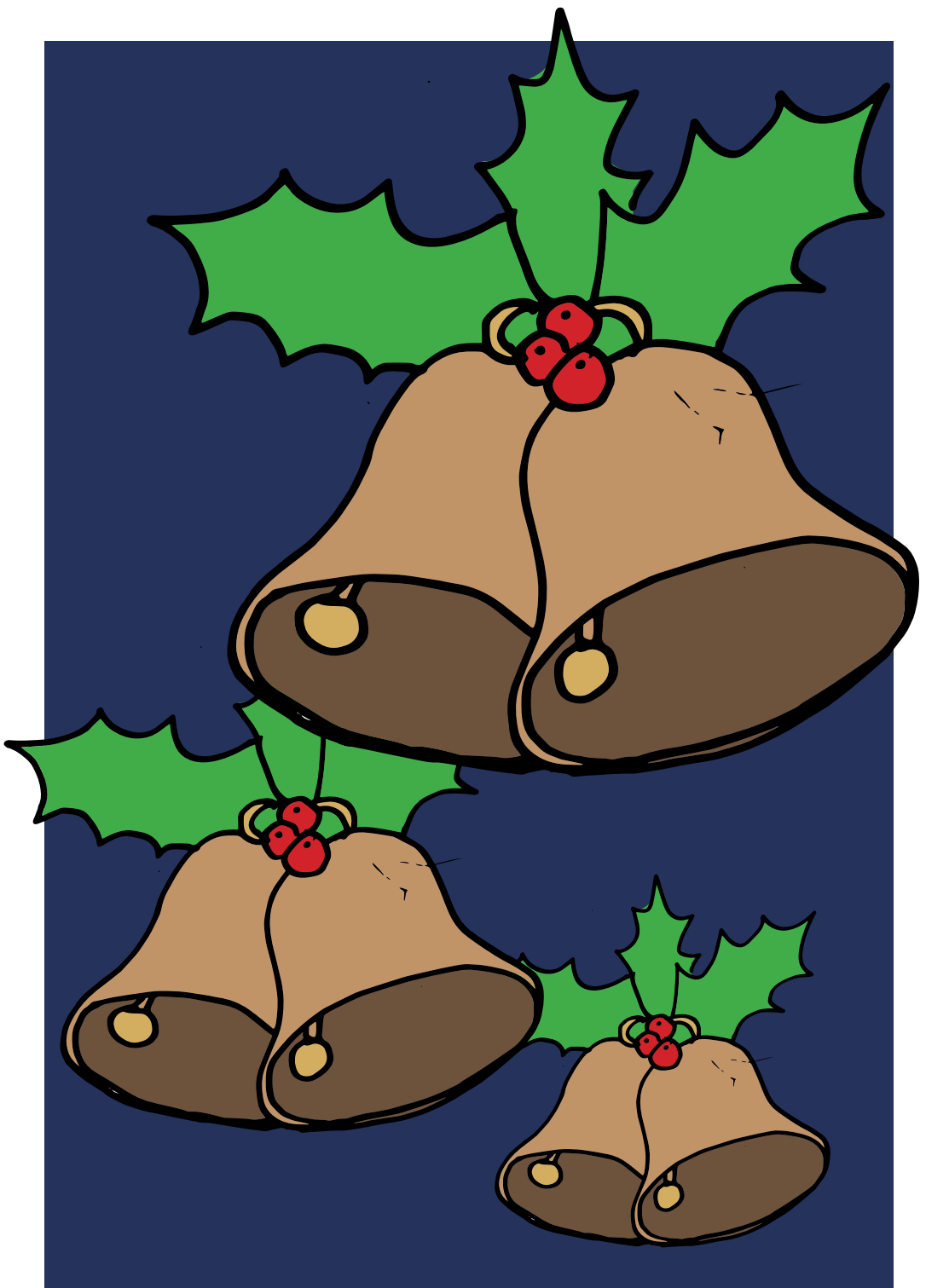


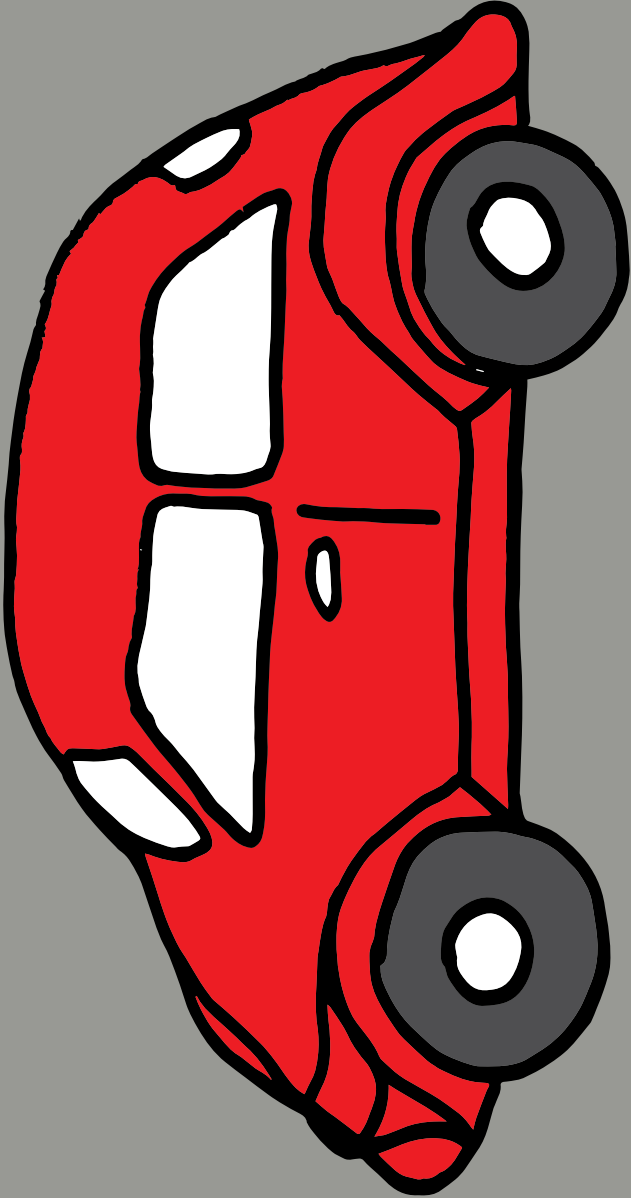


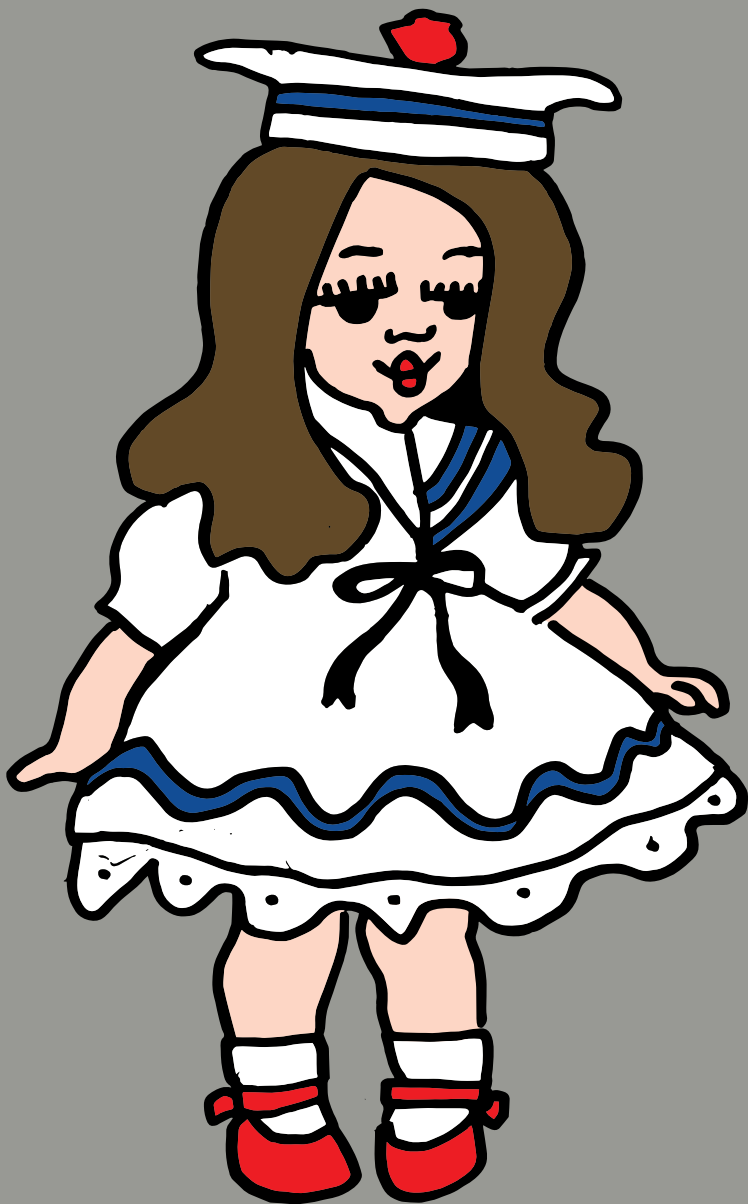


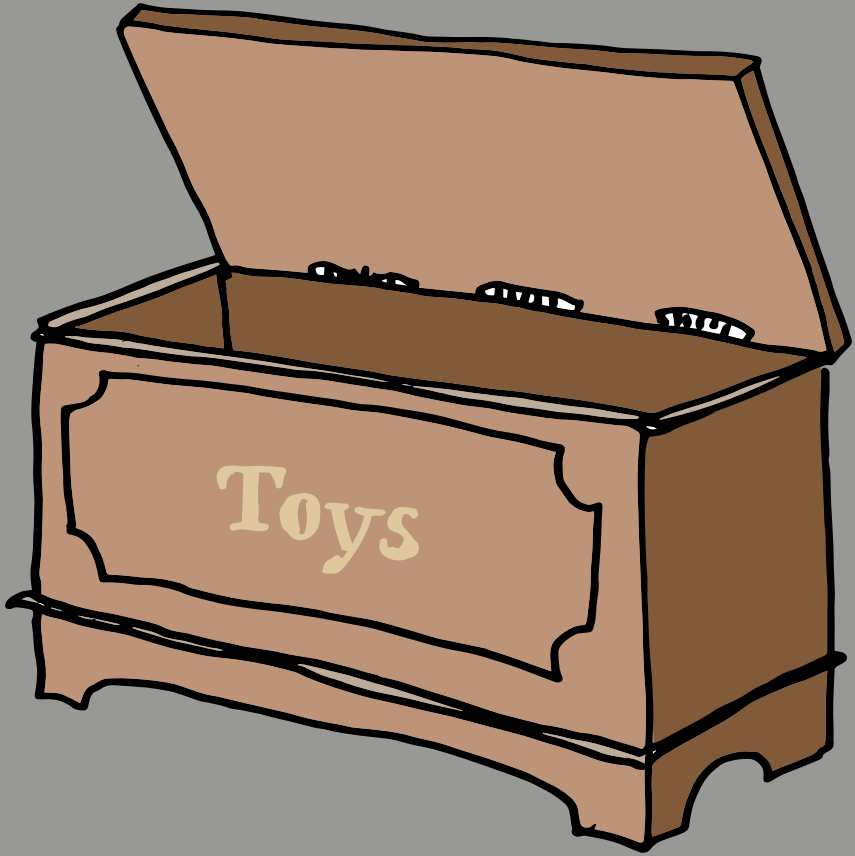


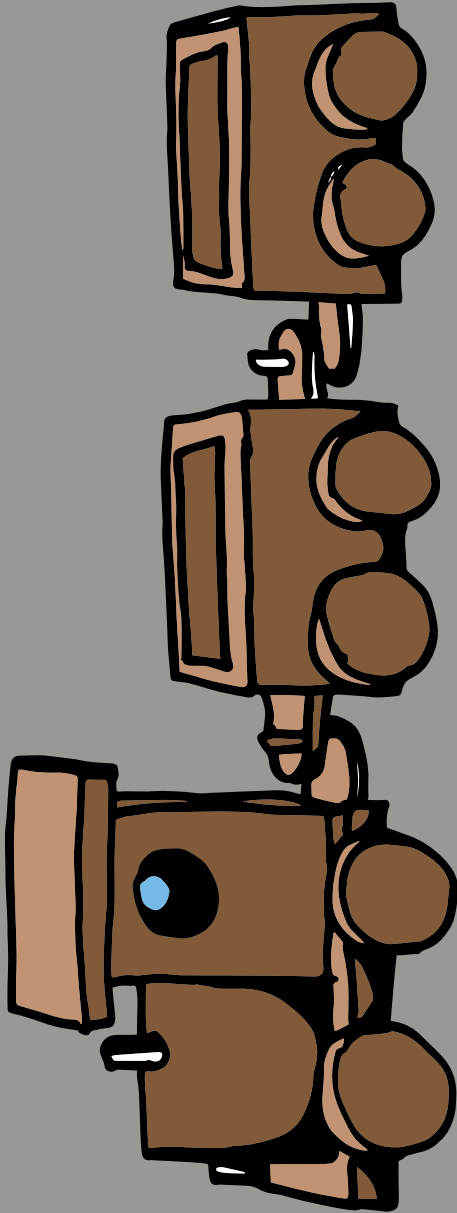


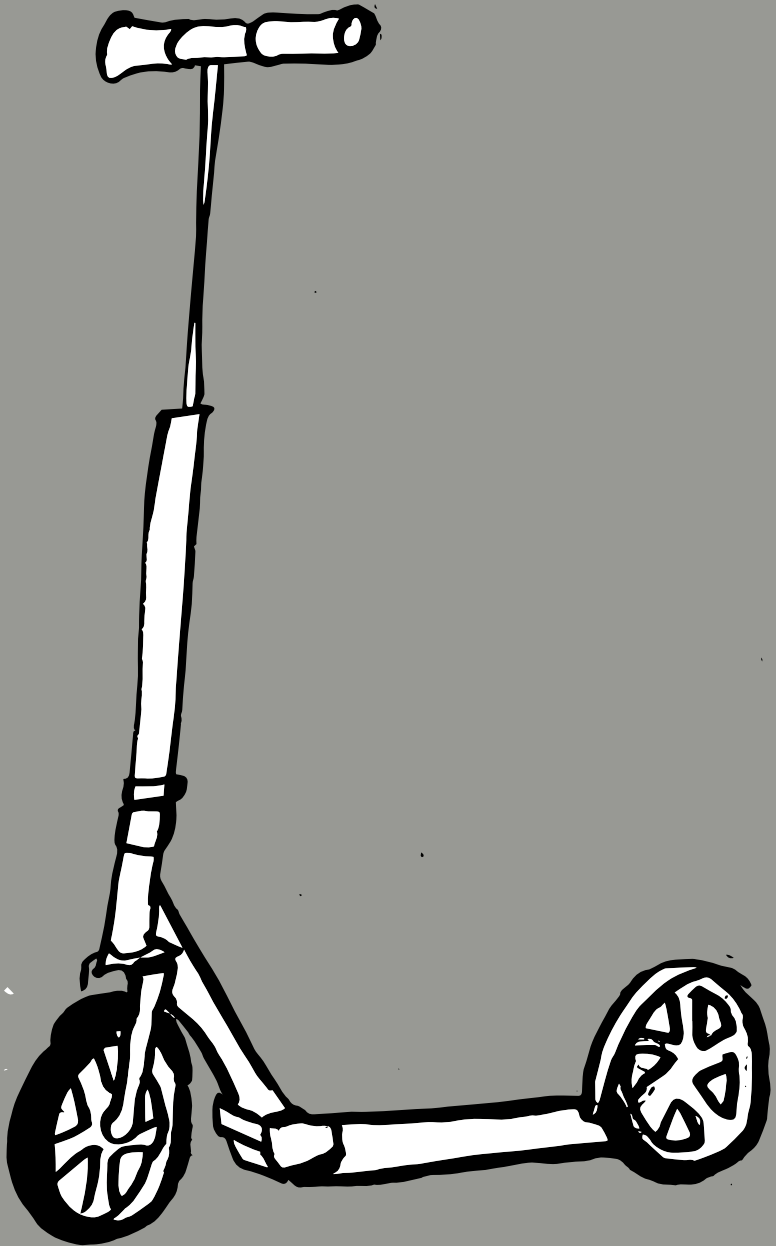


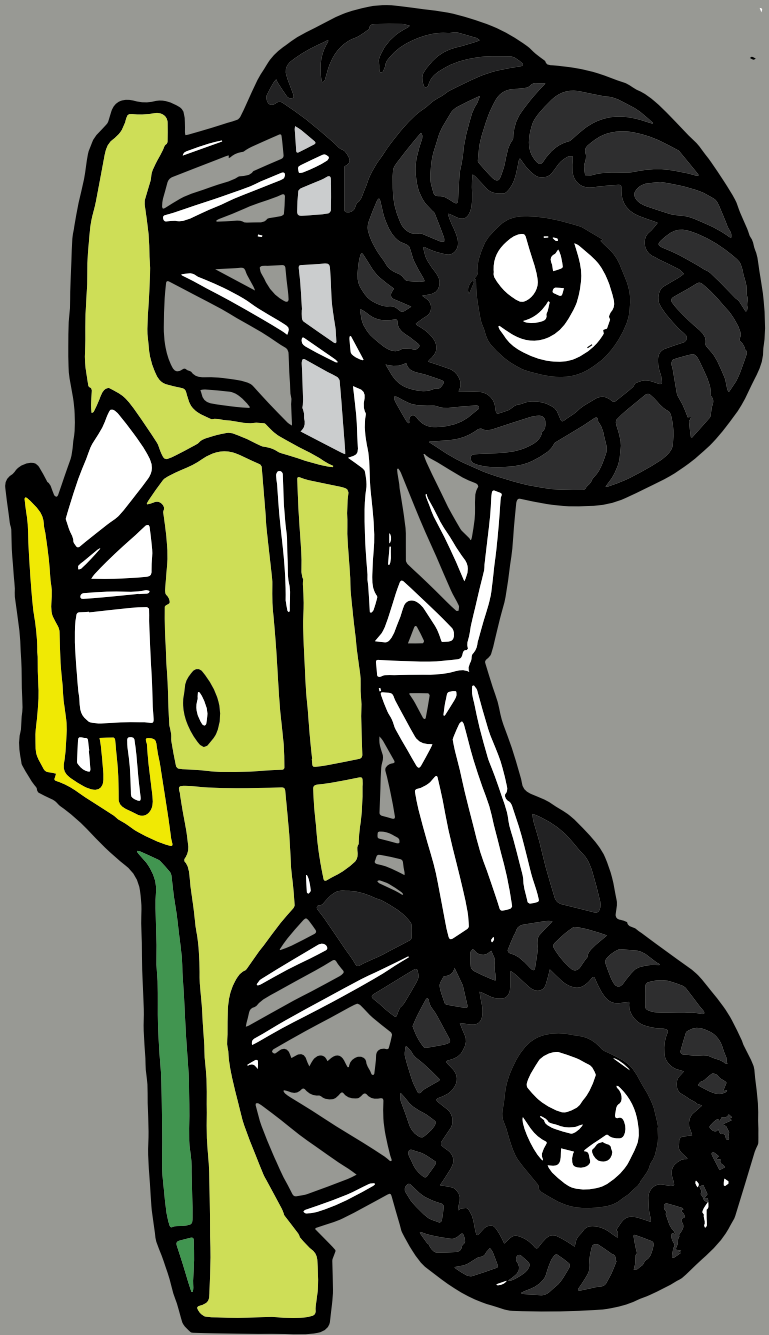




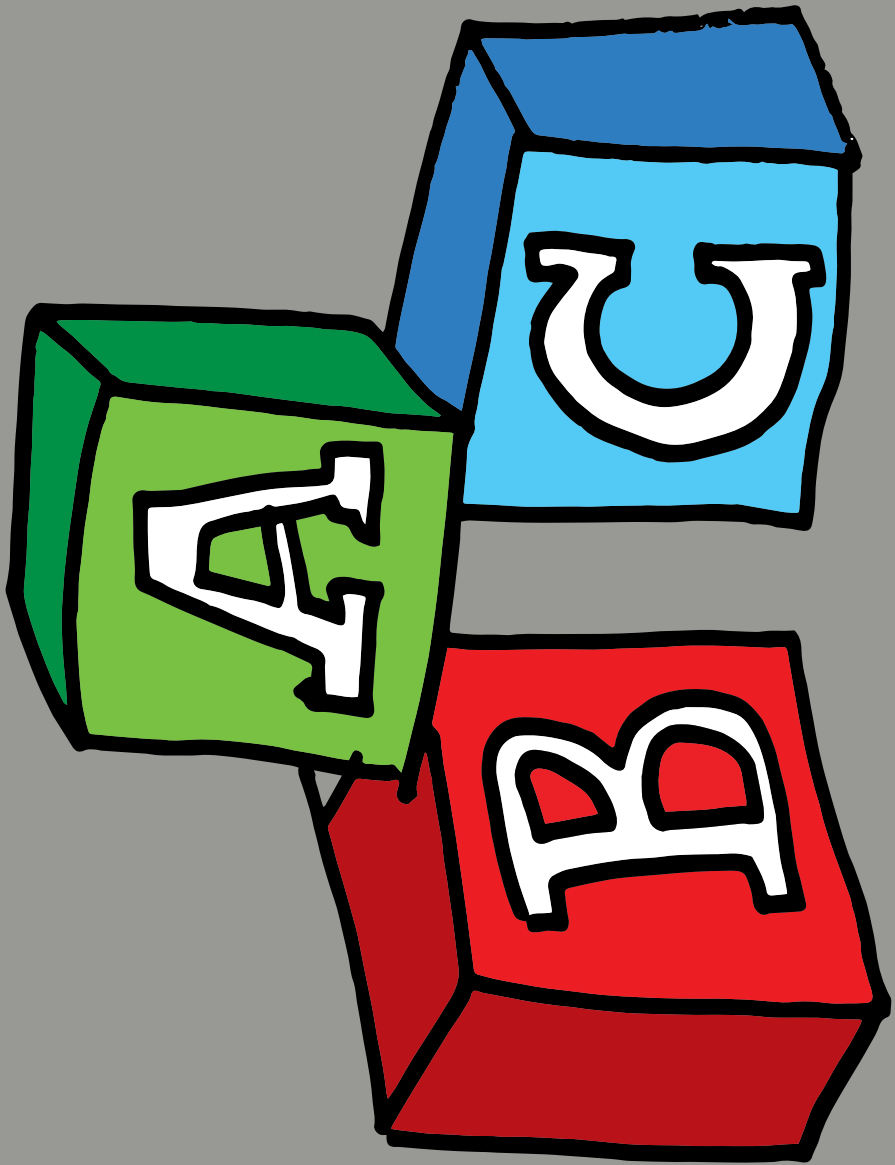


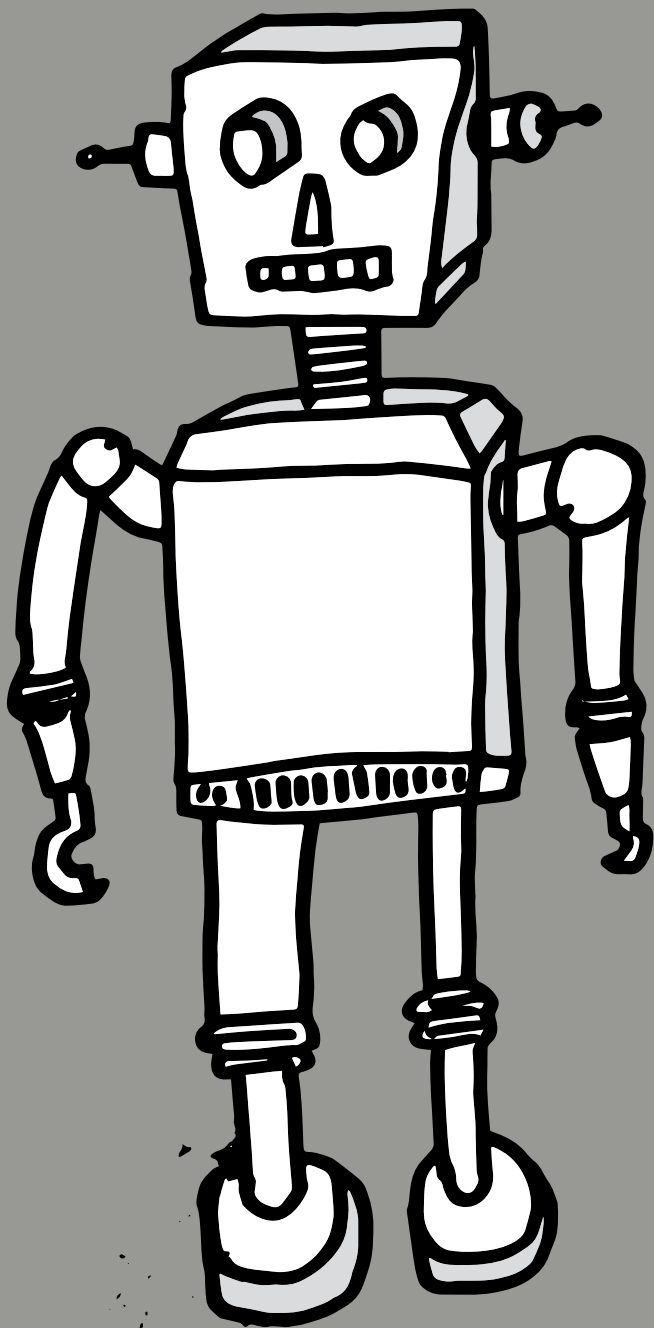


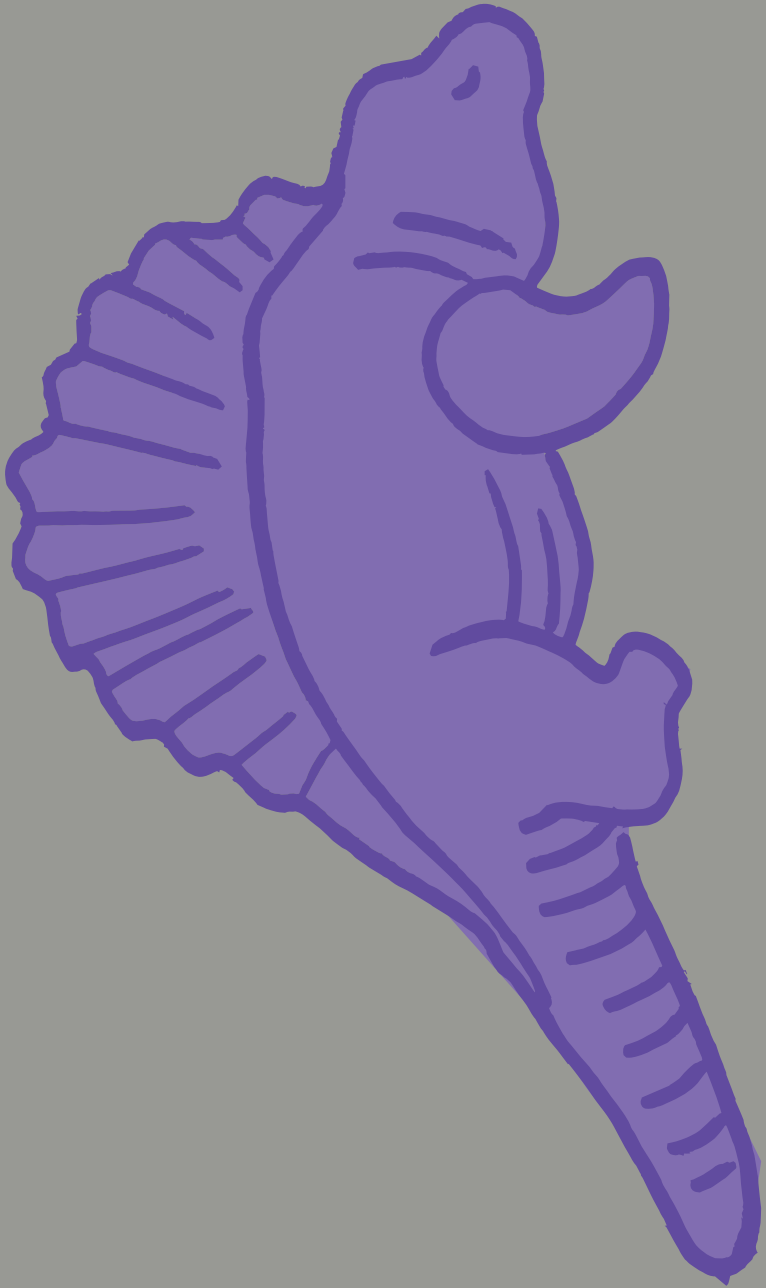


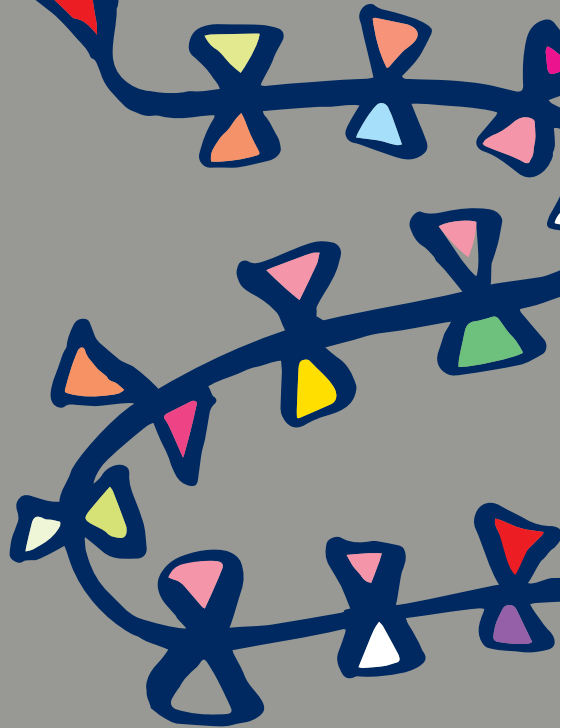
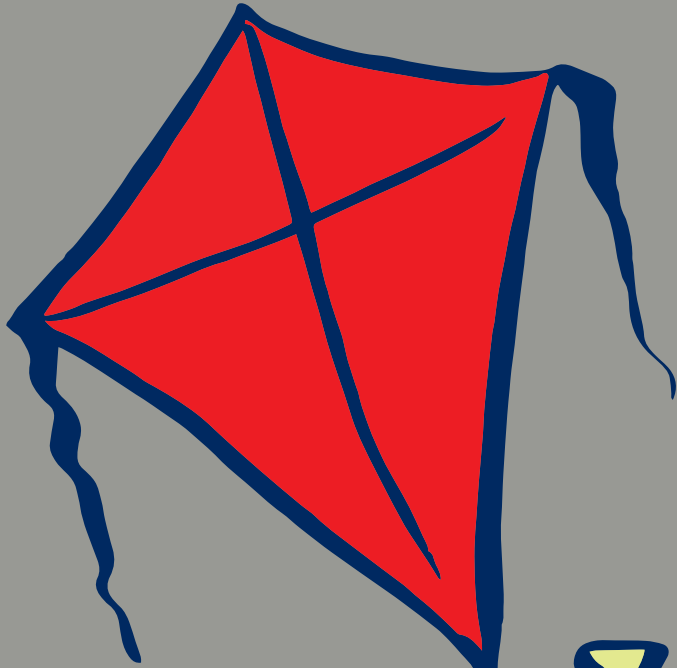


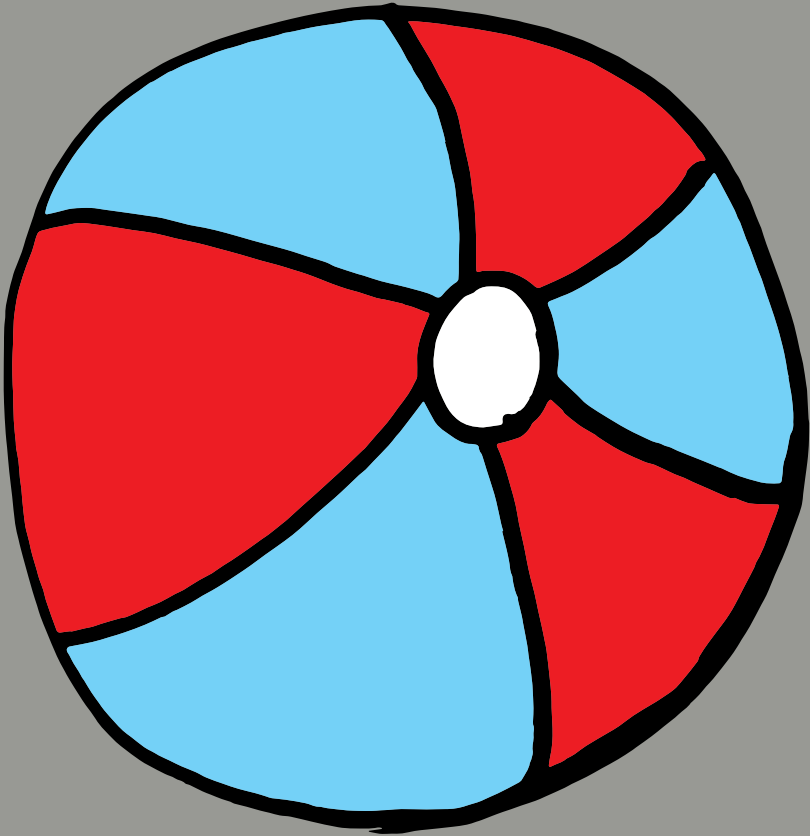


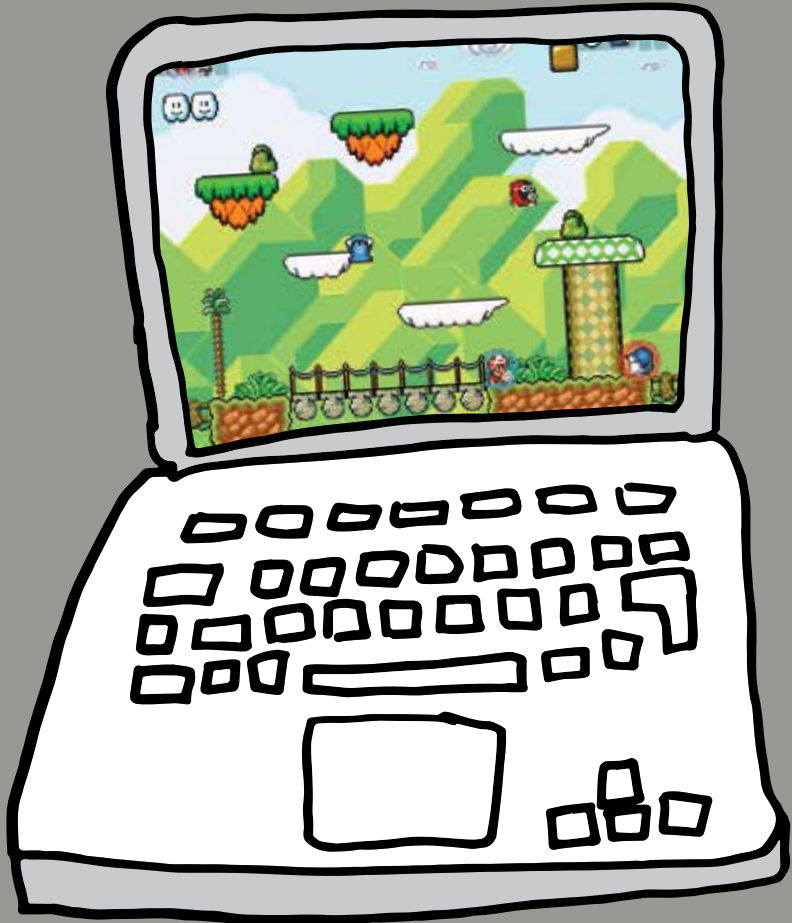






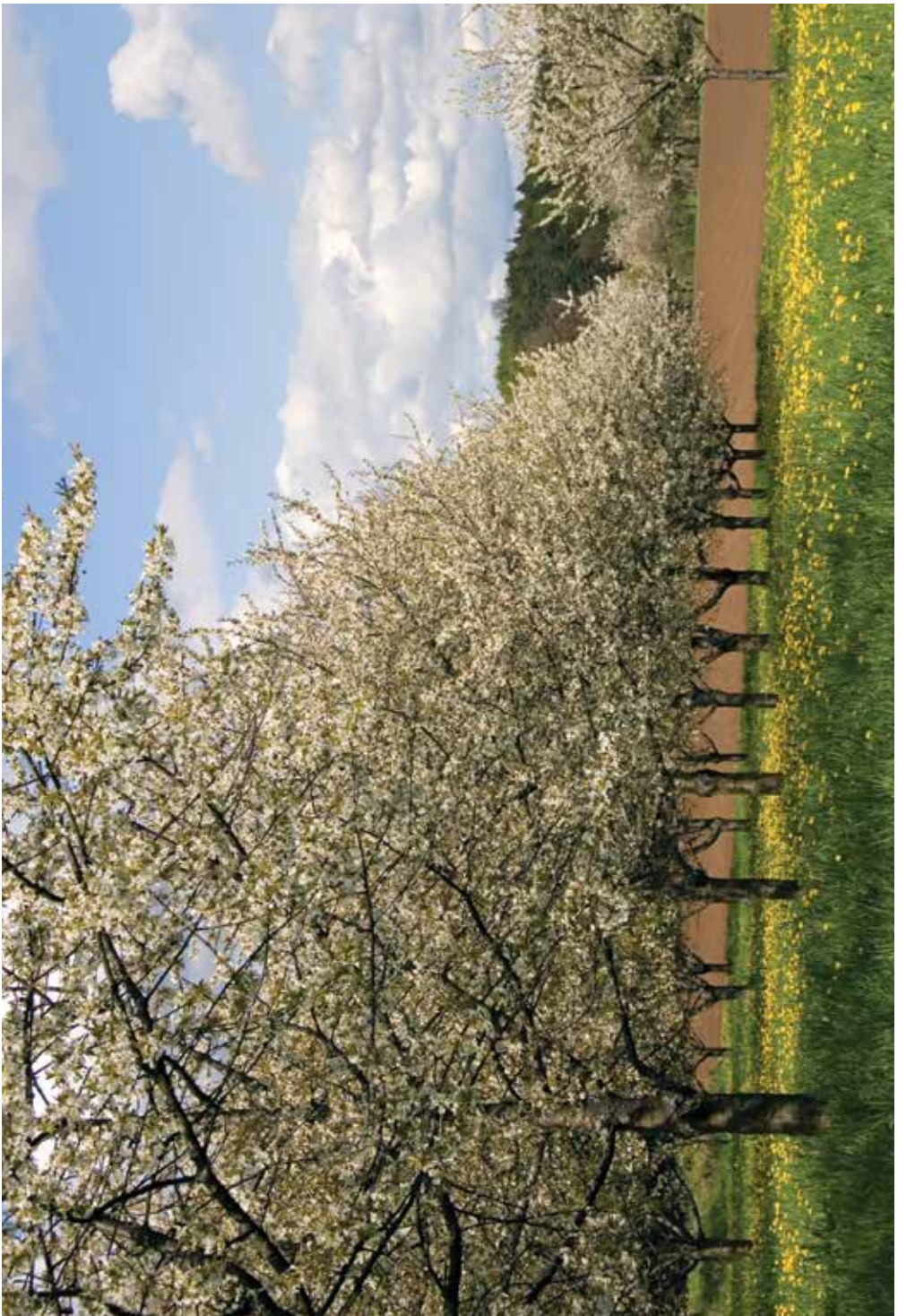














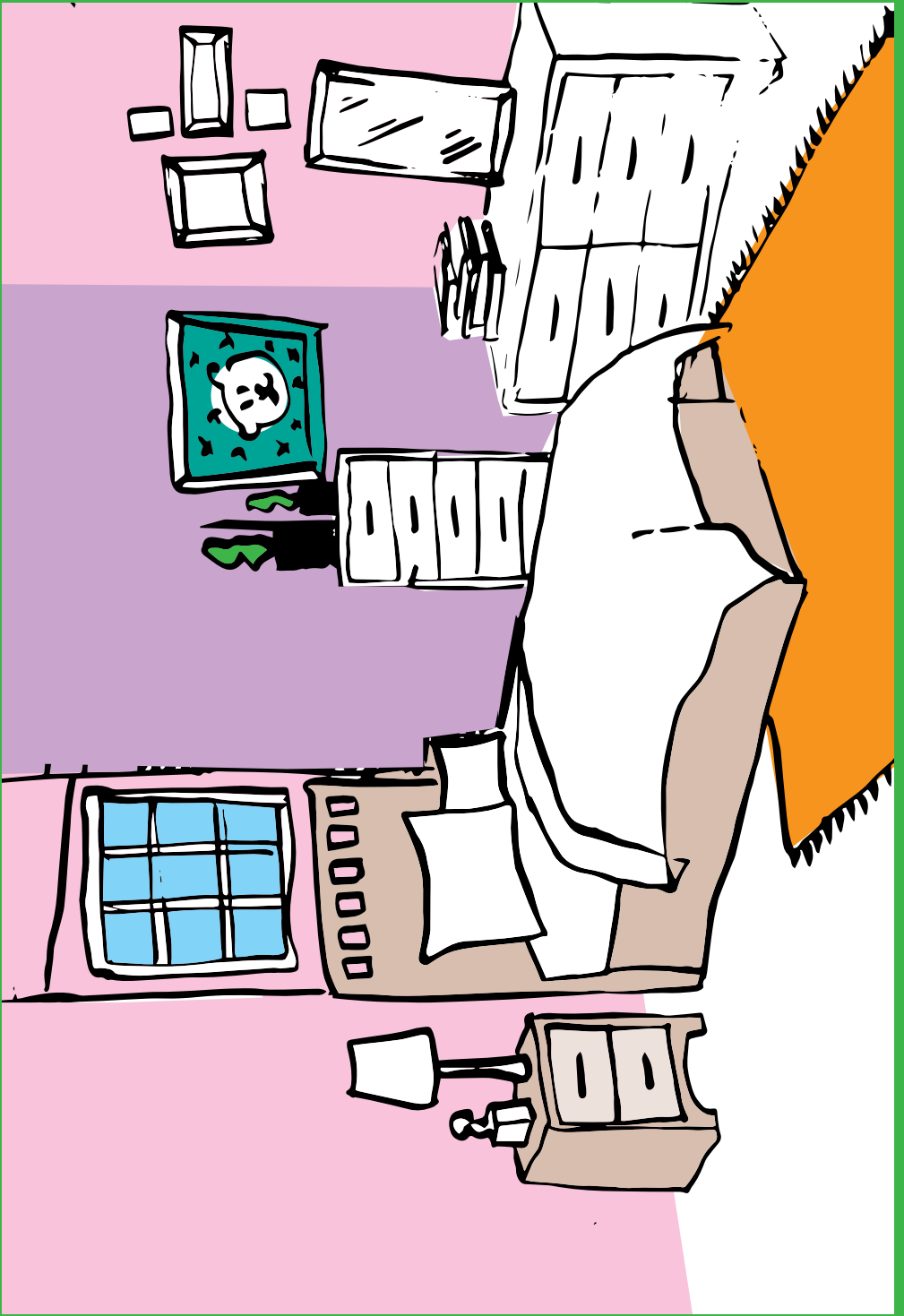


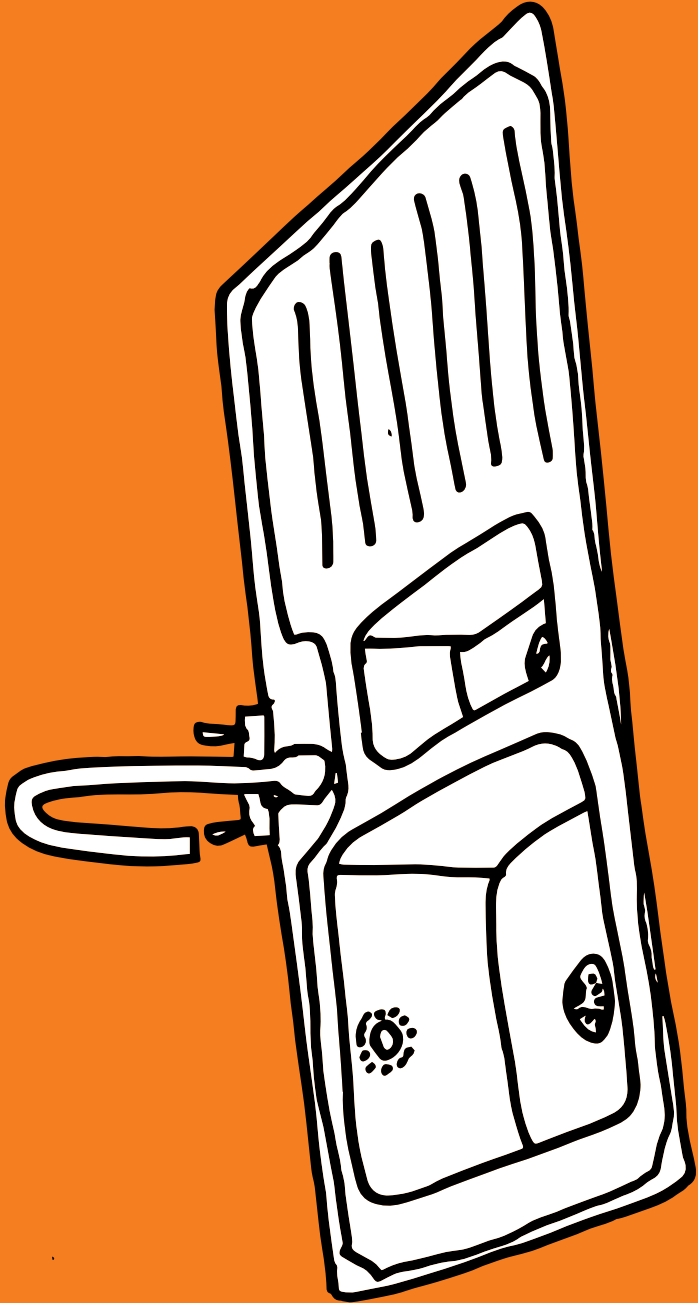


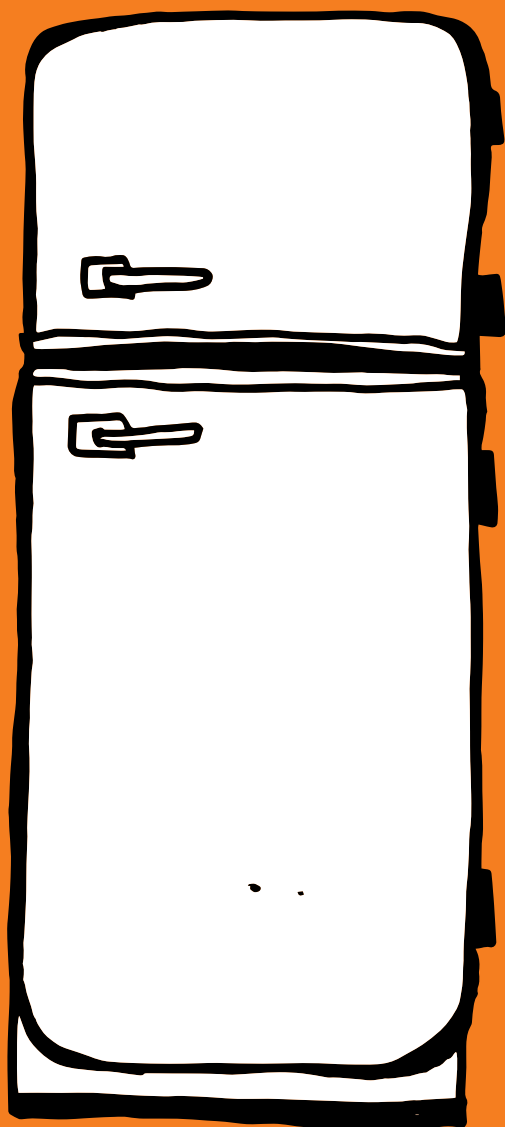


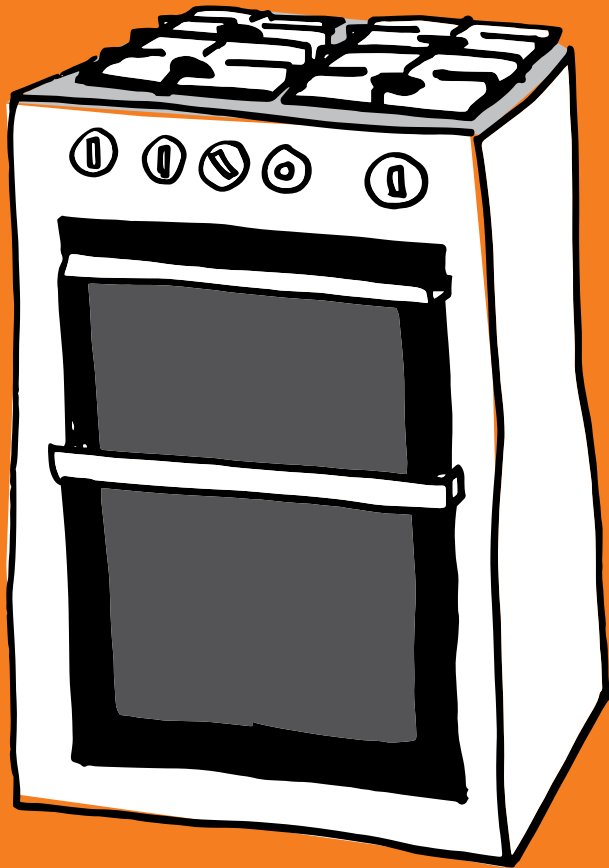




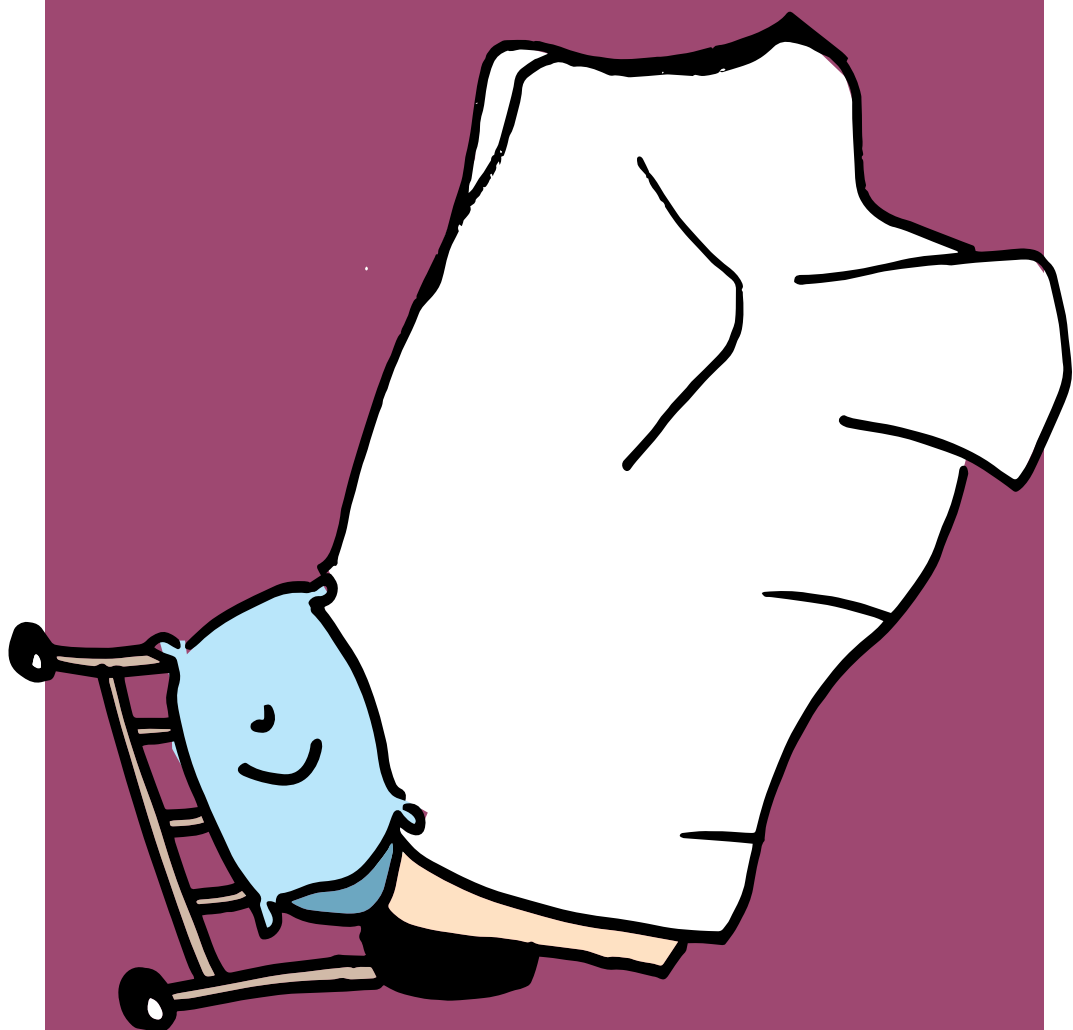


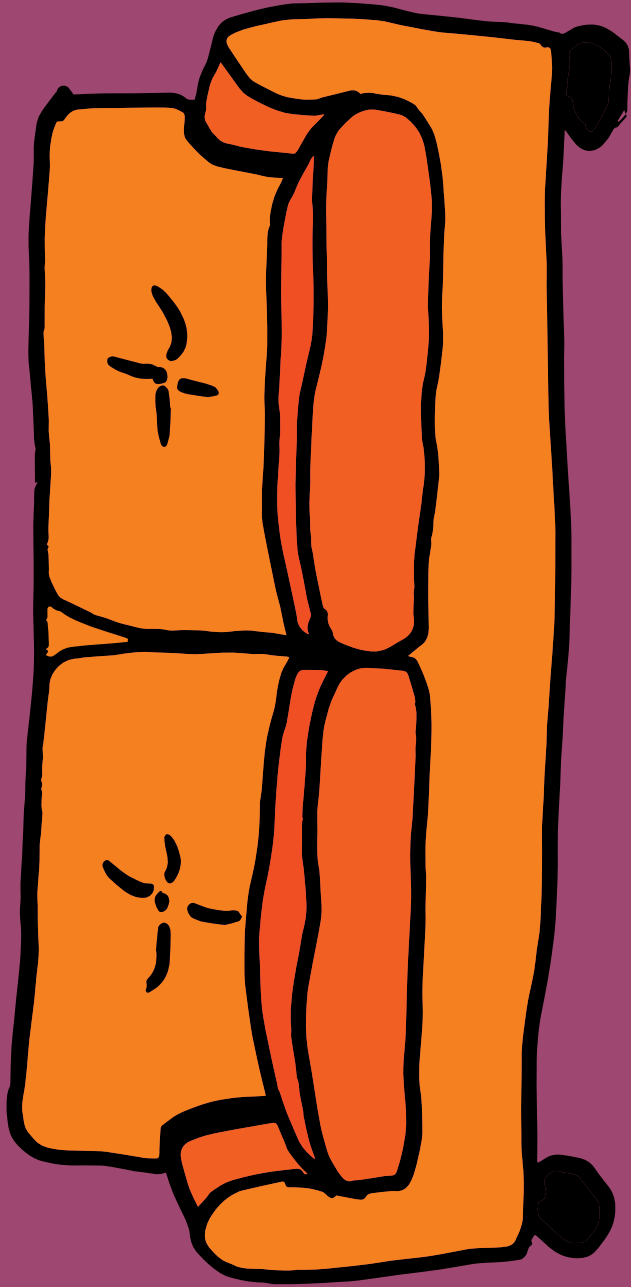


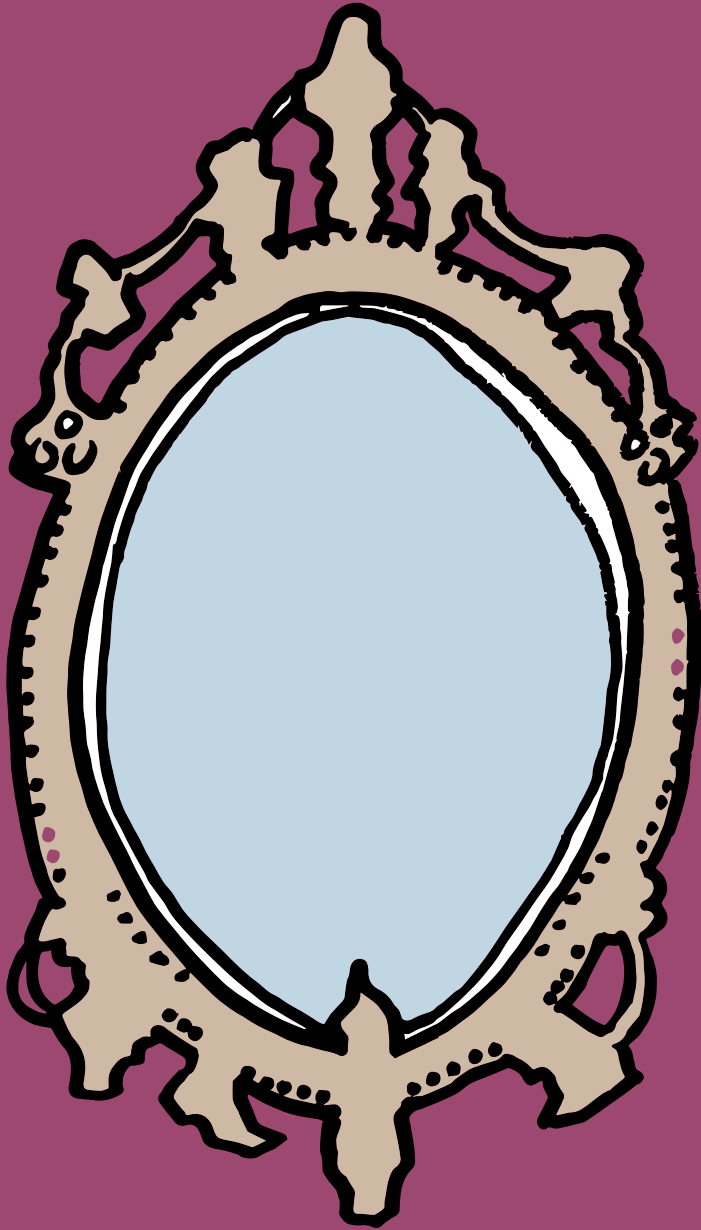




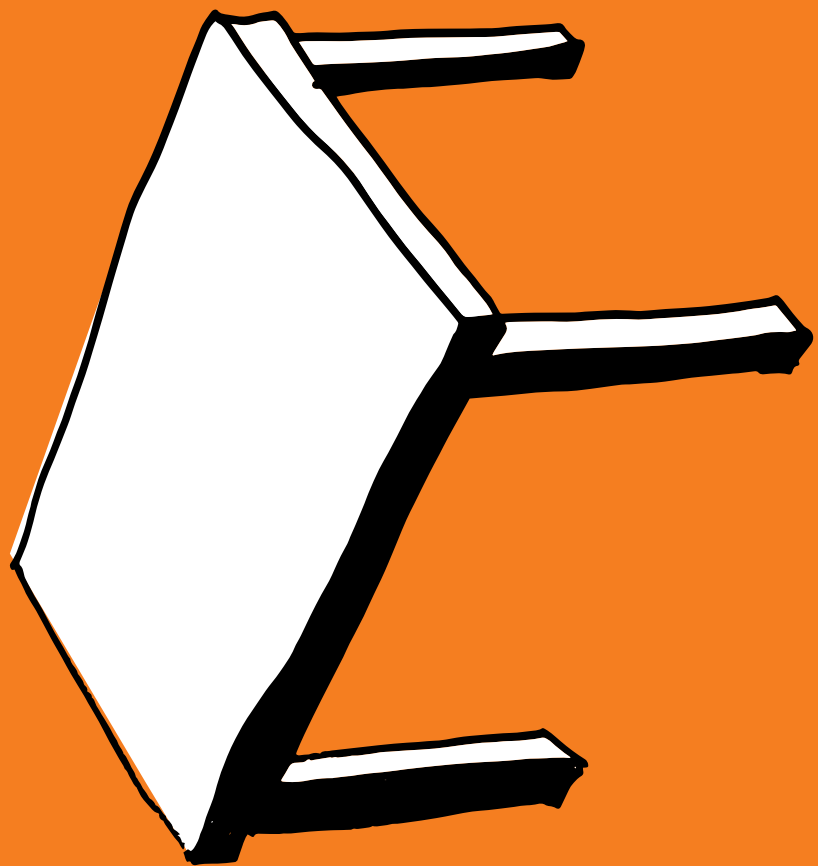






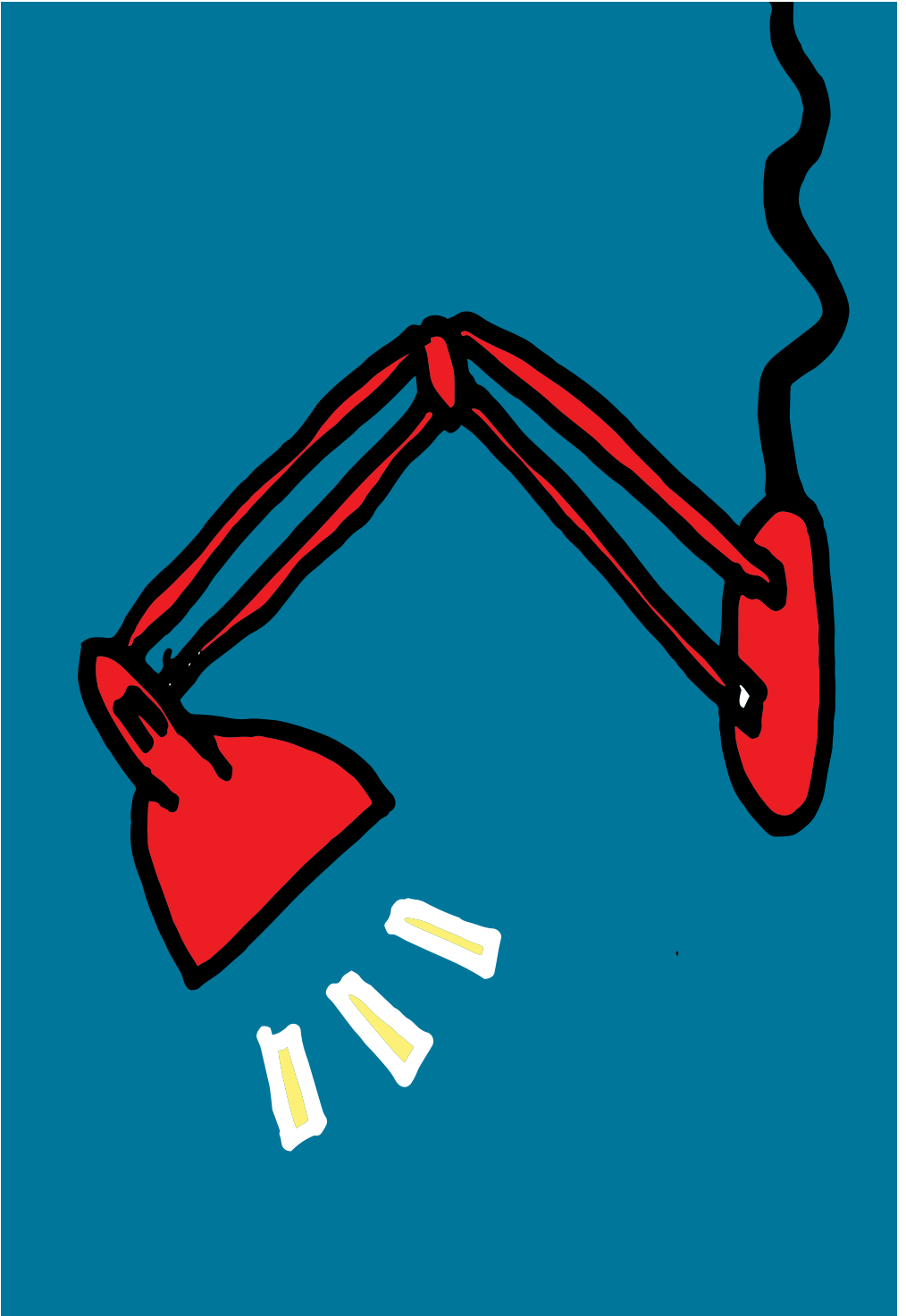




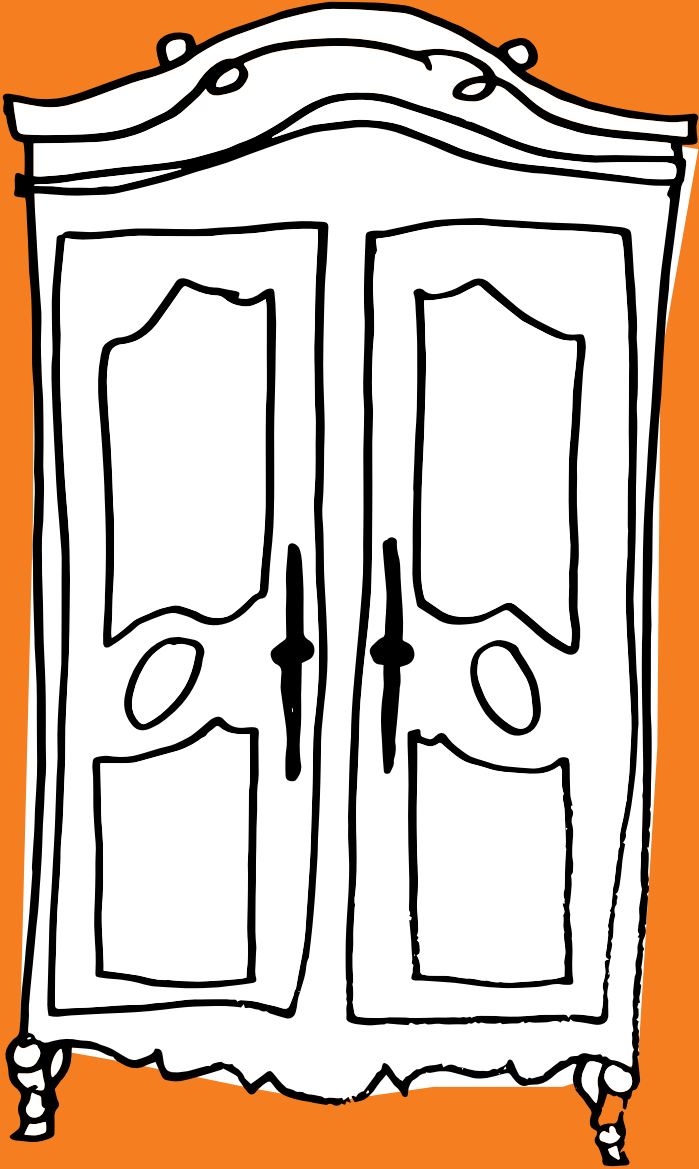


































the 1990s, the number of people who are employed in the service sector has increased in all countries. The increase is most pronounced in the United States, where the service sector has become the dominant sector of the economy. In the Netherlands, the service sector has also become the dominant sector, but the increase is less pronounced than in the United States.

The increase in the service sector has led to a decrease in the number of people who are employed in the manufacturing sector. This is true for all countries. The decrease is most pronounced in the United States, where the manufacturing sector has become the second largest sector of the economy. In the Netherlands, the manufacturing sector has also become the second largest sector, but the decrease is less pronounced than in the United States.

The increase in the service sector and the decrease in the manufacturing sector have led to a change in the composition of the labor force. The labor force is now more service-oriented than in the past. This is true for all countries. The change is most pronounced in the United States, where the service sector now employs more than 70% of the labor force. In the Netherlands, the service sector now employs about 60% of the labor force.

The change in the composition of the labor force has led to a change in the skills requirements of the labor force. The labor force now requires more skills than in the past. This is true for all countries. The change is most pronounced in the United States, where the labor force now requires more skills than in any other country. In the Netherlands, the labor force now requires more skills than in the past, but less than in the United States.

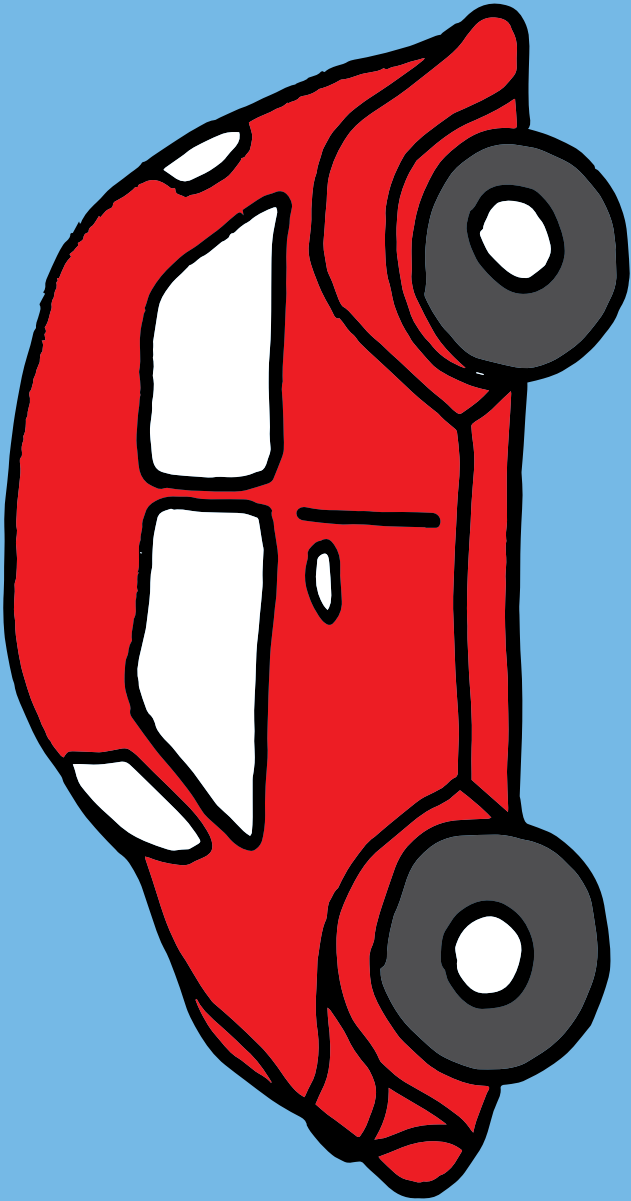
The change in the skills requirements of the labor force has led to a change in the education requirements of the labor force. The labor force now requires more education than in the past. This is true for all countries. The change is most pronounced in the United States, where the labor force now requires more education than in any other country. In the Netherlands, the labor force now requires more education than in the past, but less than in the United States.

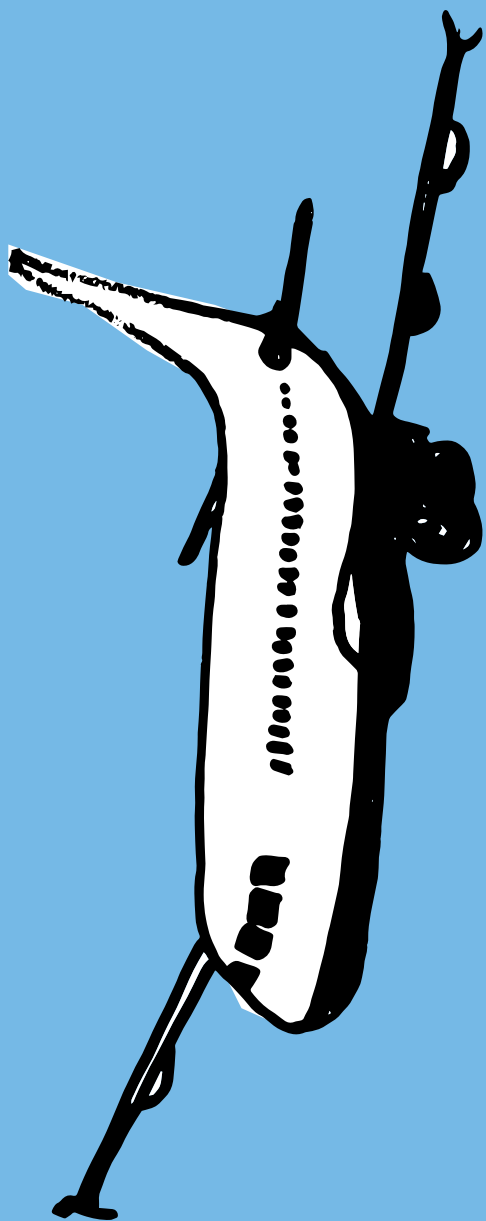
The change in the education requirements of the labor force has led to a change in the investment in education. The investment in education has increased in all countries. The increase is most pronounced in the United States, where the investment in education has become the largest of any country. In the Netherlands, the investment in education has also increased, but less than in the United States.

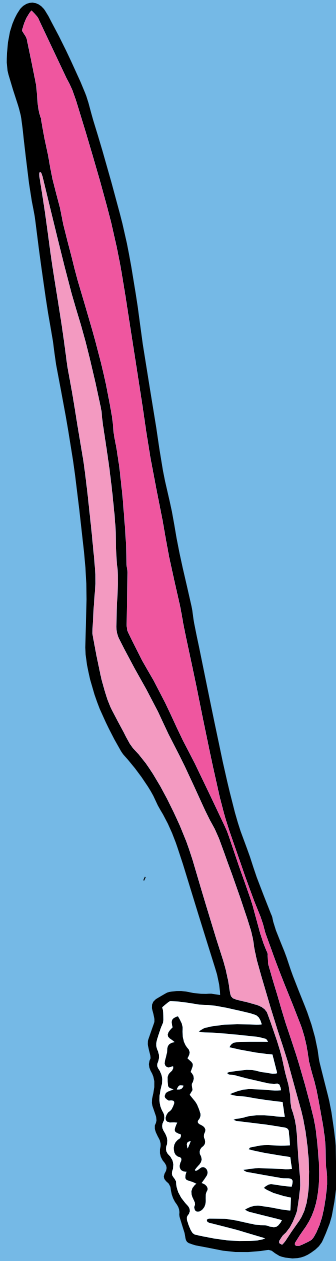
The change in the investment in education has led to a change in the quality of education. The quality of education has improved in all countries. The improvement is most pronounced in the United States, where the quality of education has become the highest of any country. In the Netherlands, the quality of education has also improved, but less than in the United States.

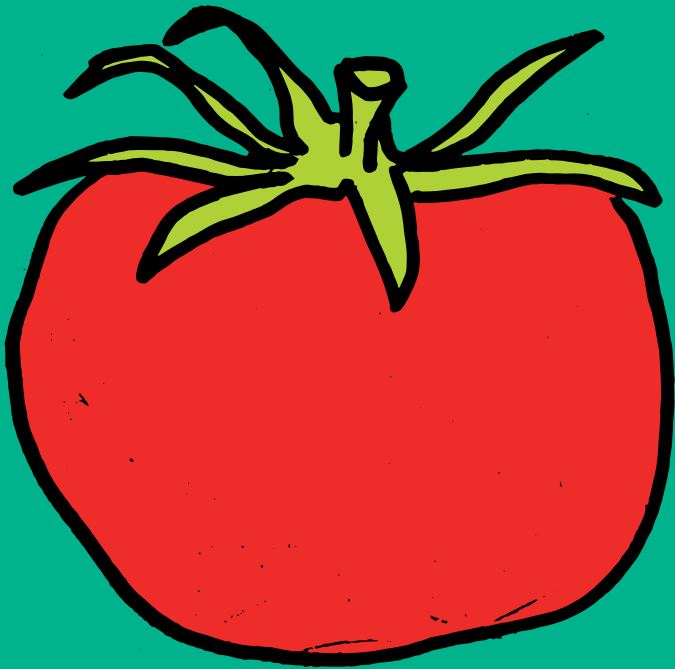
The change in the quality of education has led to a change in the productivity of the labor force. The productivity of the labor force has increased in all countries. The increase is most pronounced in the United States, where the productivity of the labor force has become the highest of any country. In the Netherlands, the productivity of the labor force has also increased, but less than in the United States.

The change in the productivity of the labor force has led to a change in the standard of living. The standard of living has increased in all countries. The increase is most pronounced in the United States, where the standard of living has become the highest of any country. In the Netherlands, the standard of living has also increased, but less than in the United States.









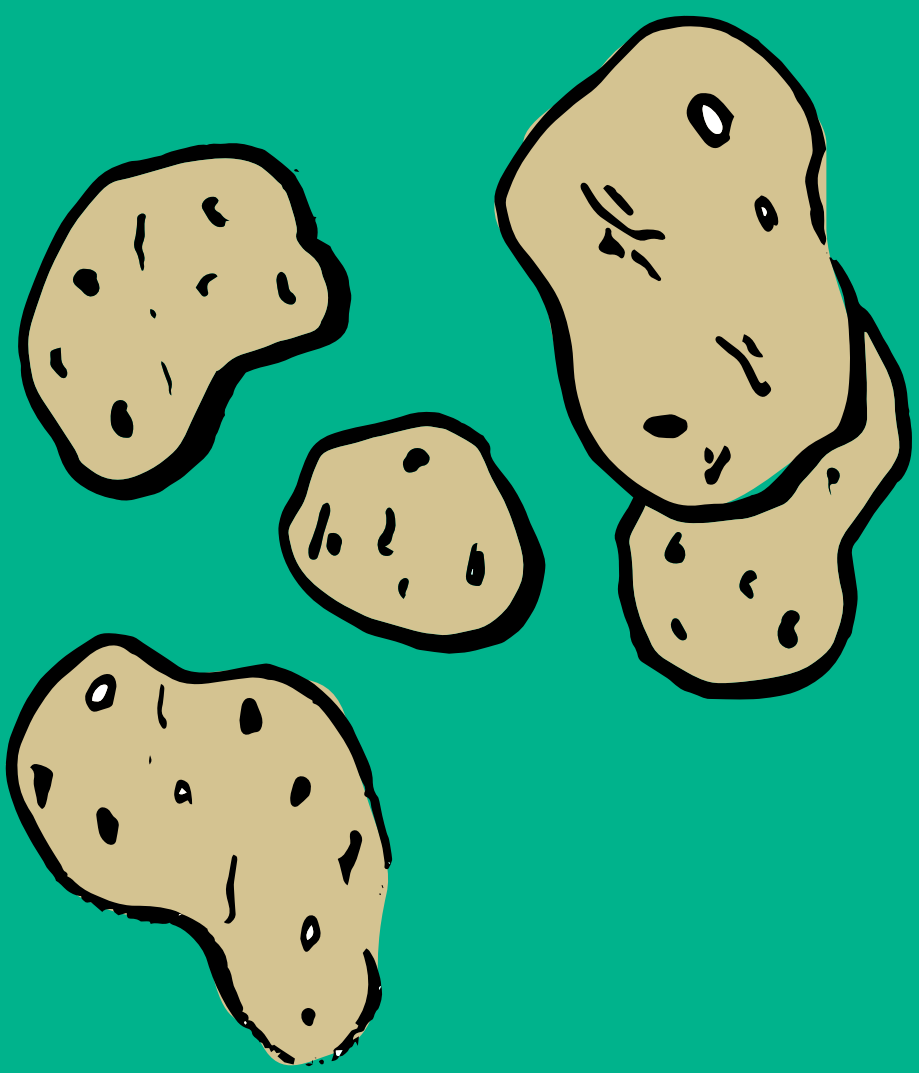




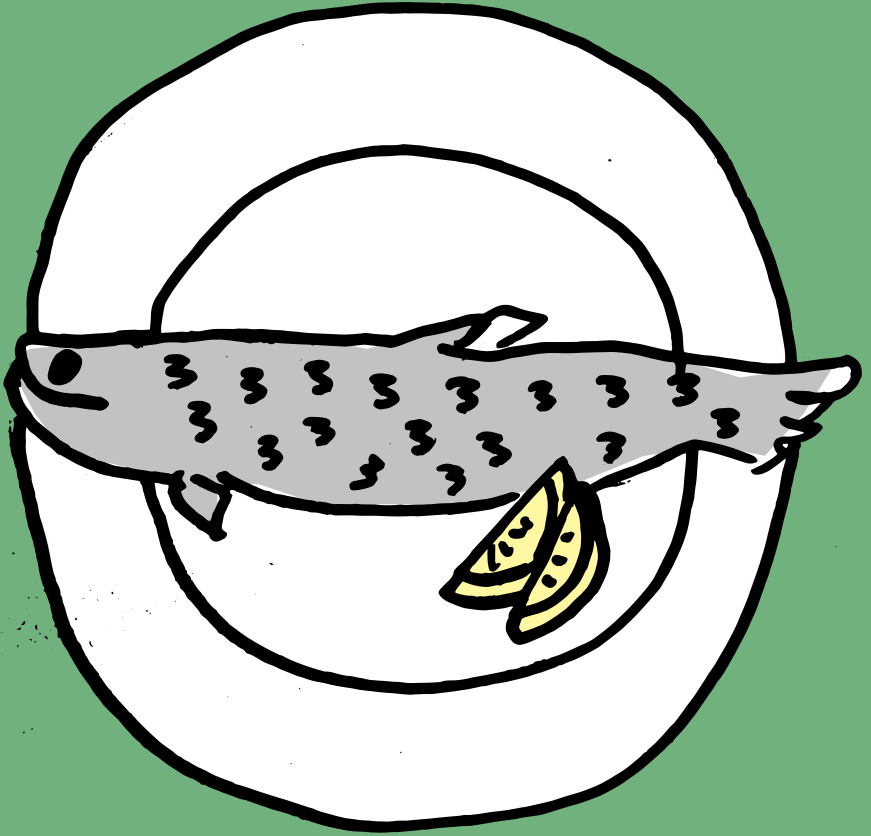


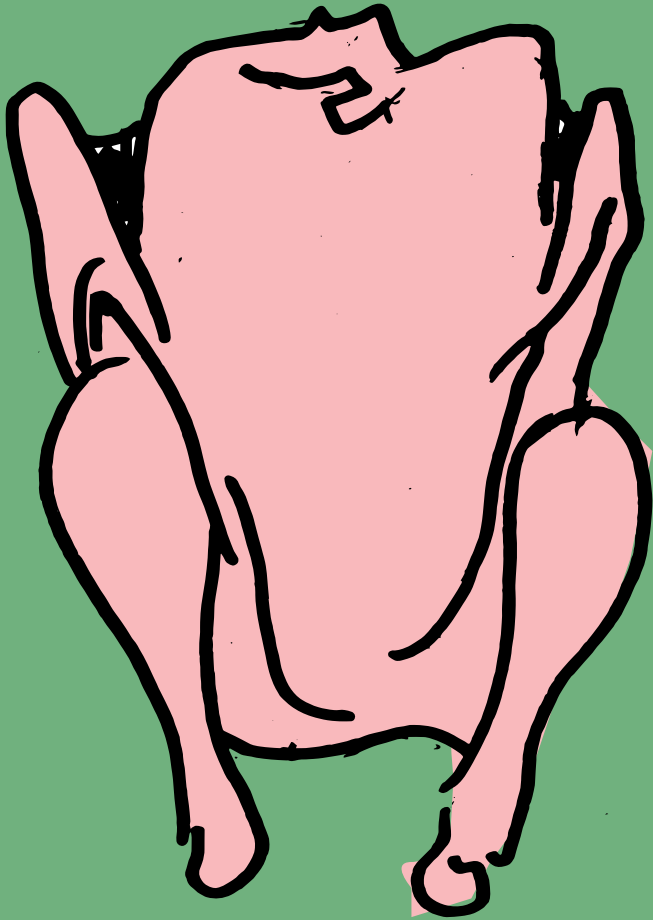


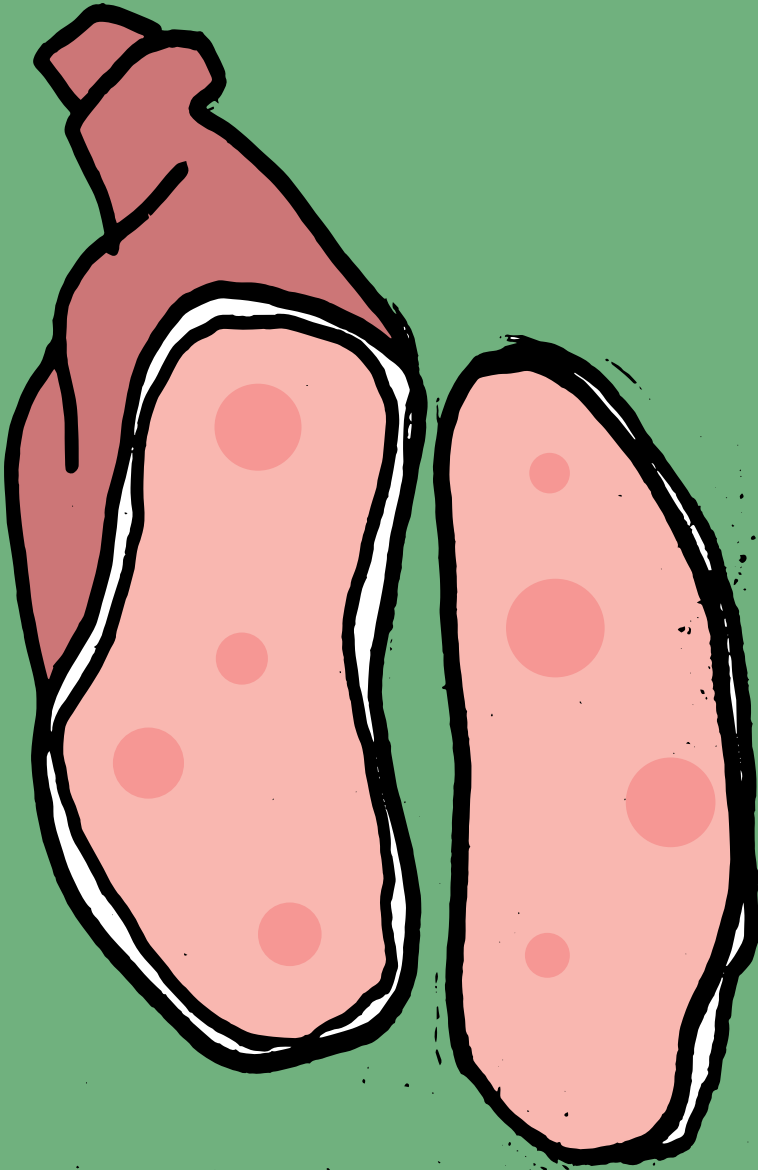




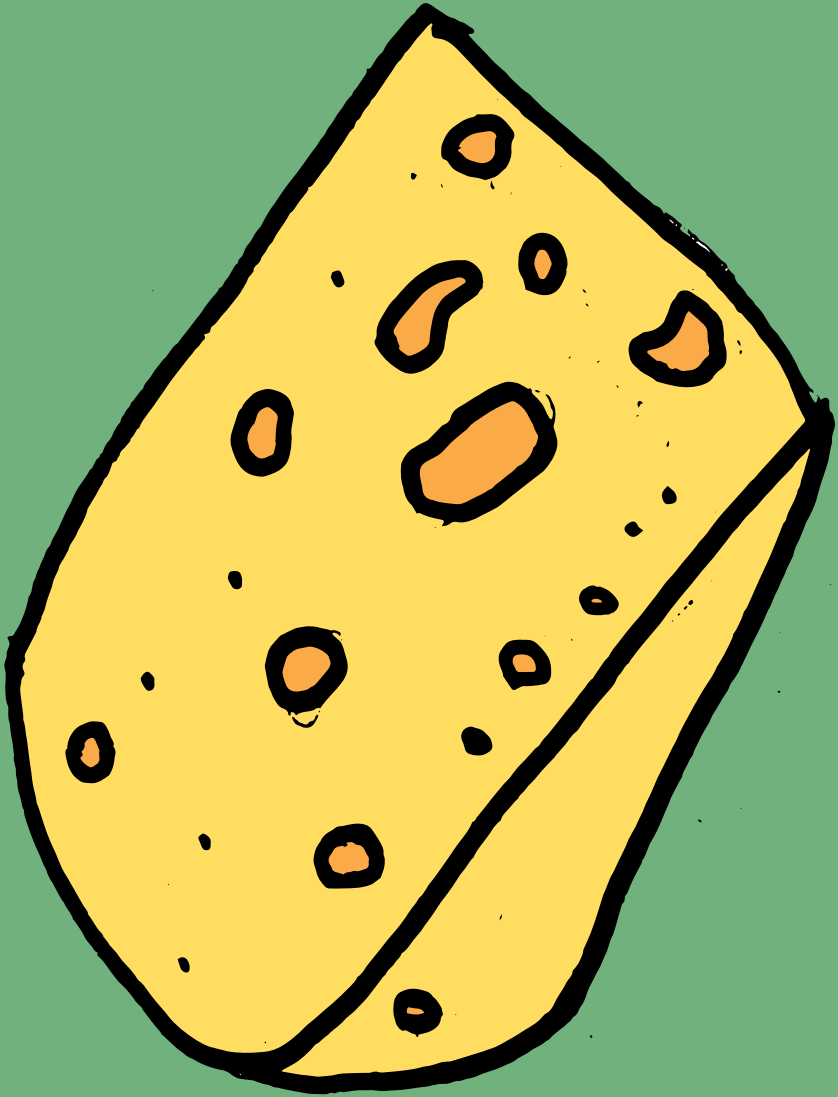






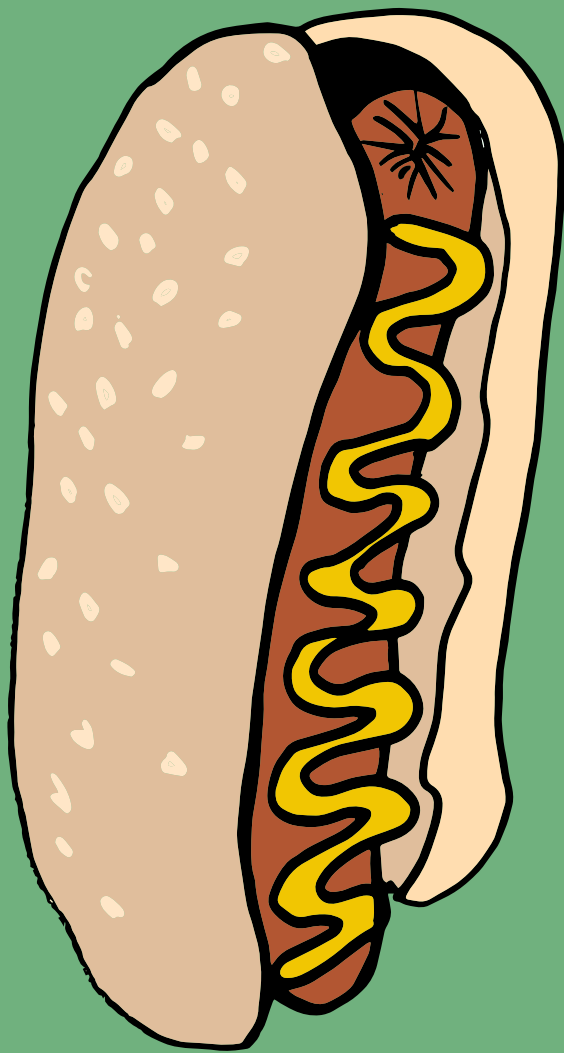


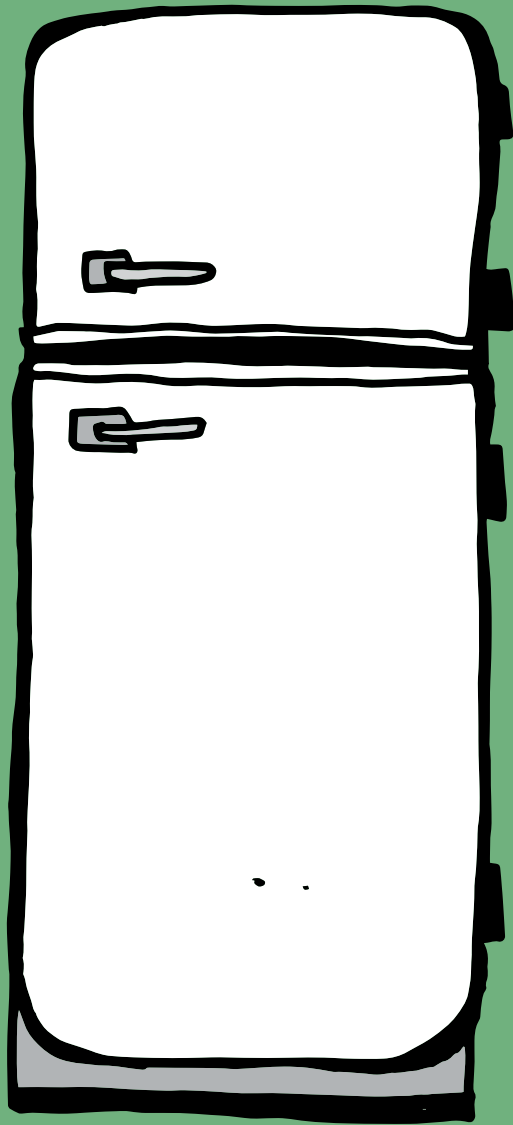


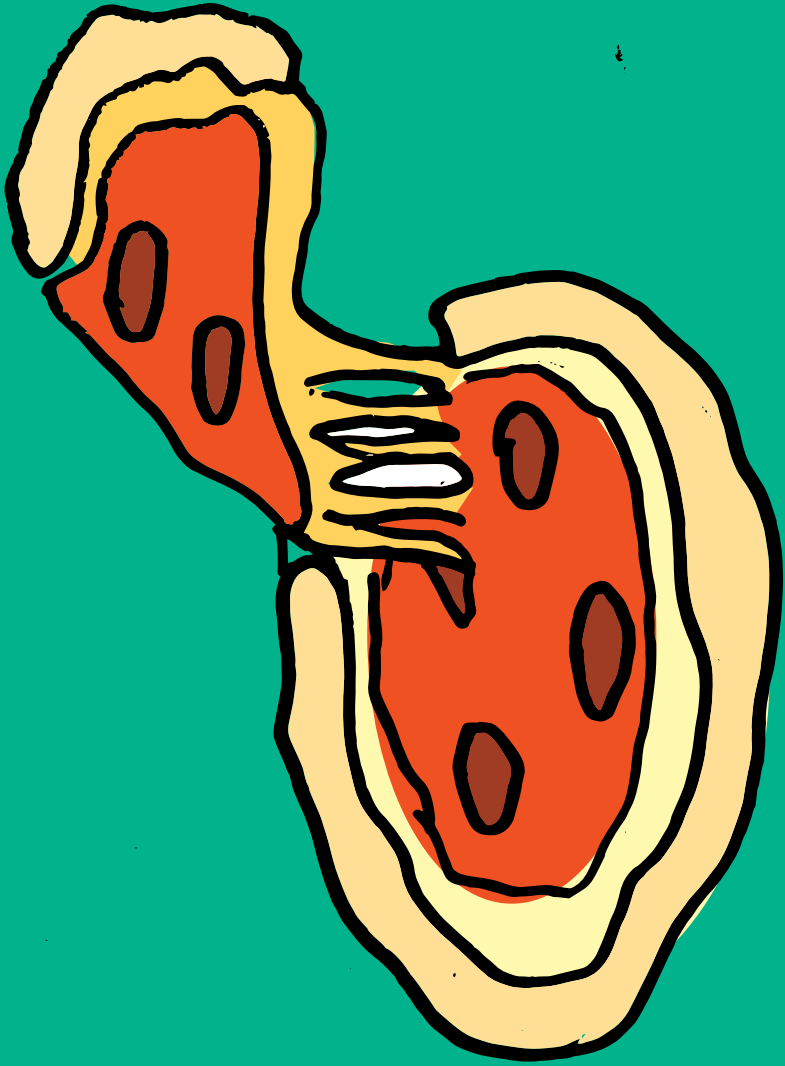


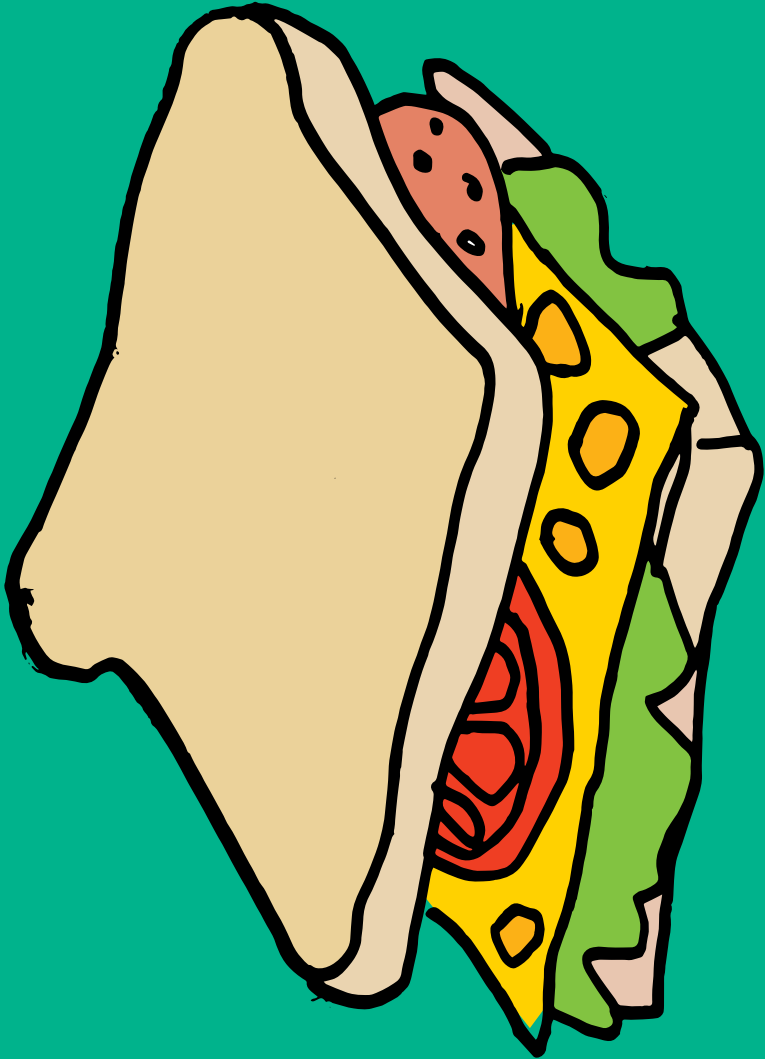












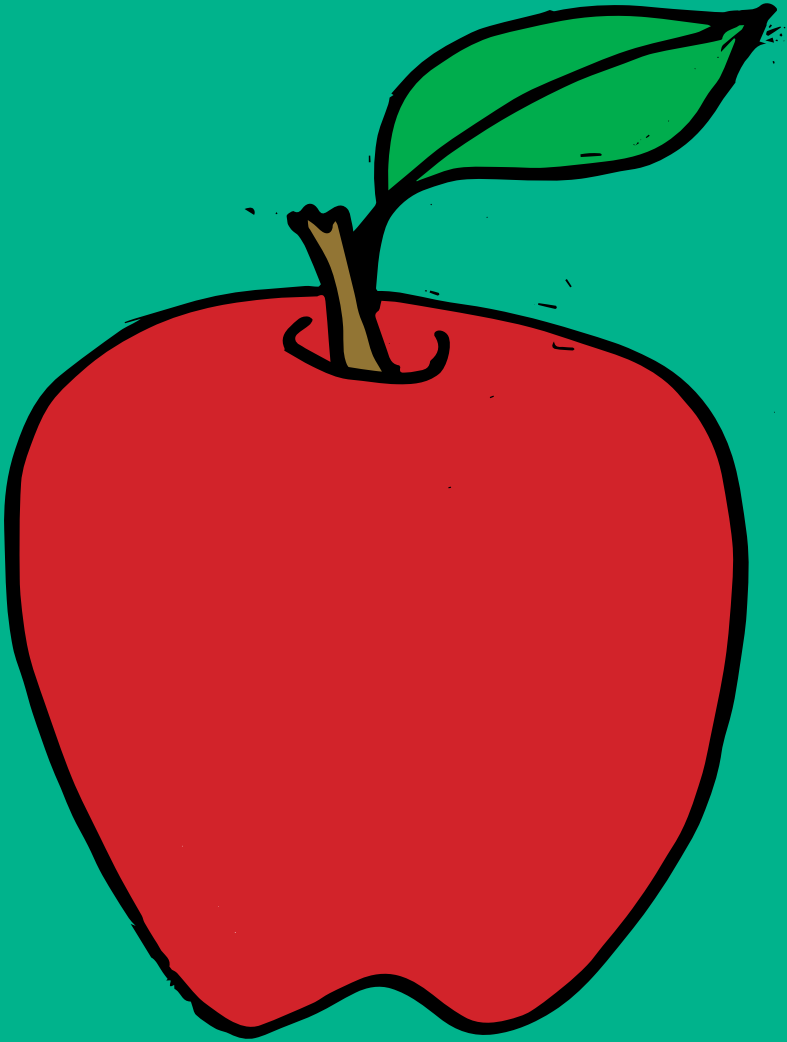


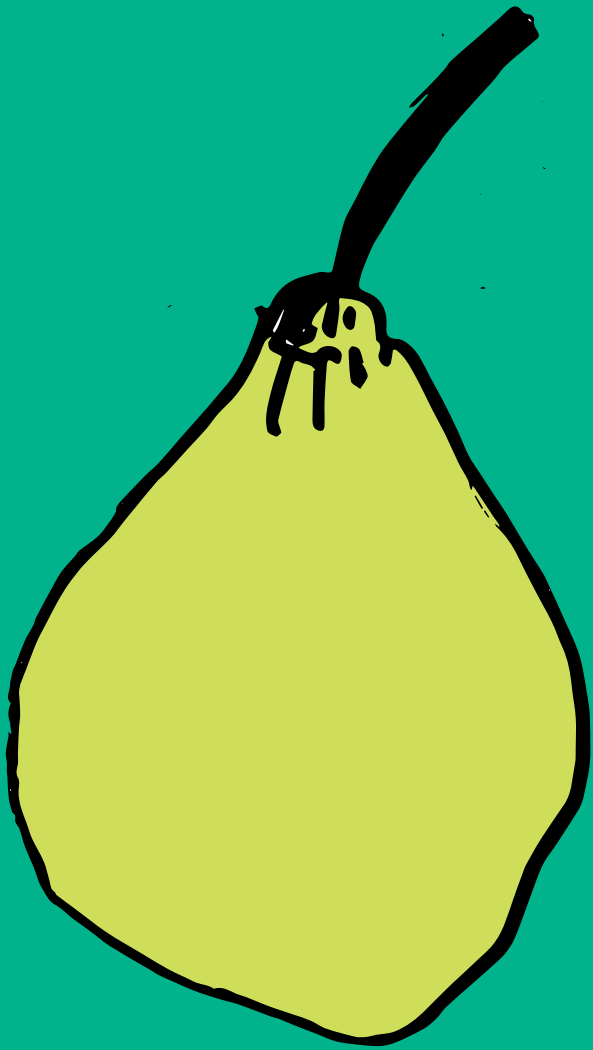


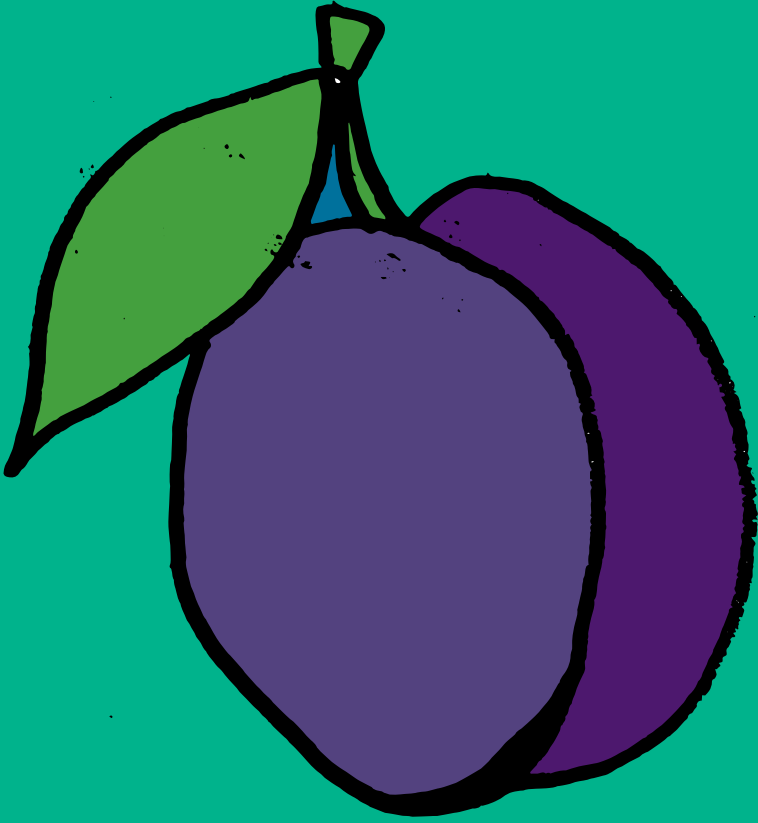


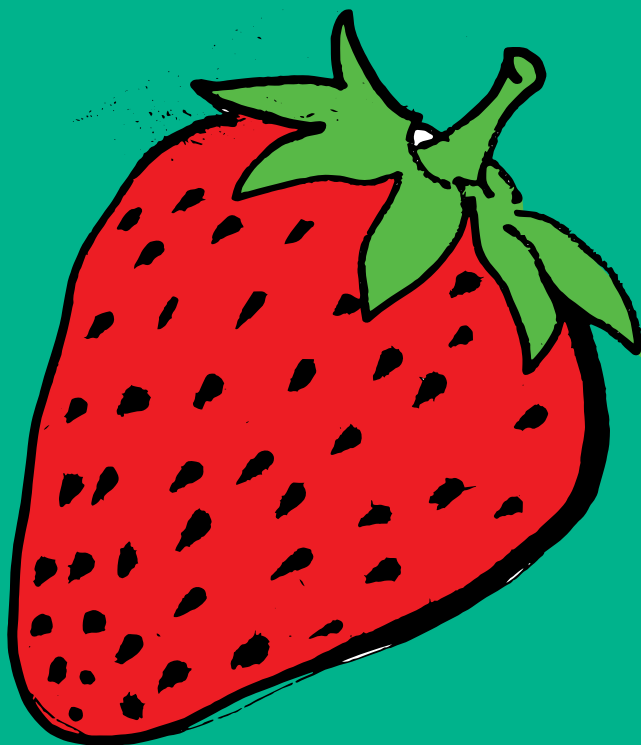


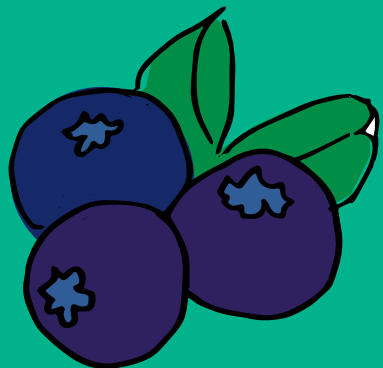
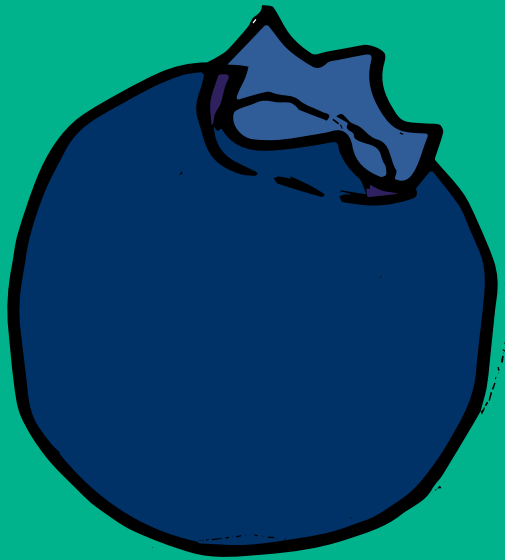




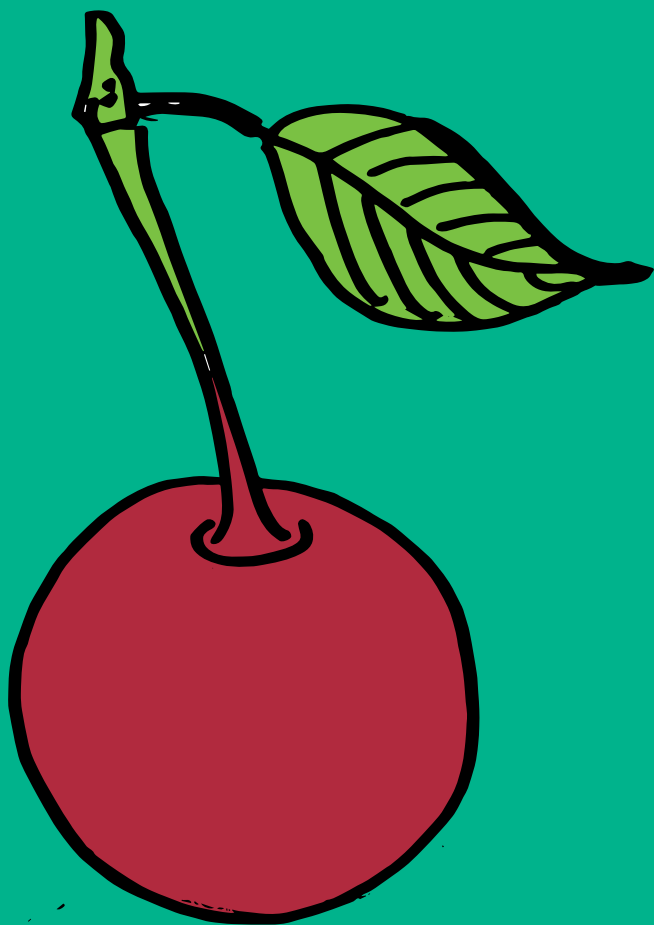


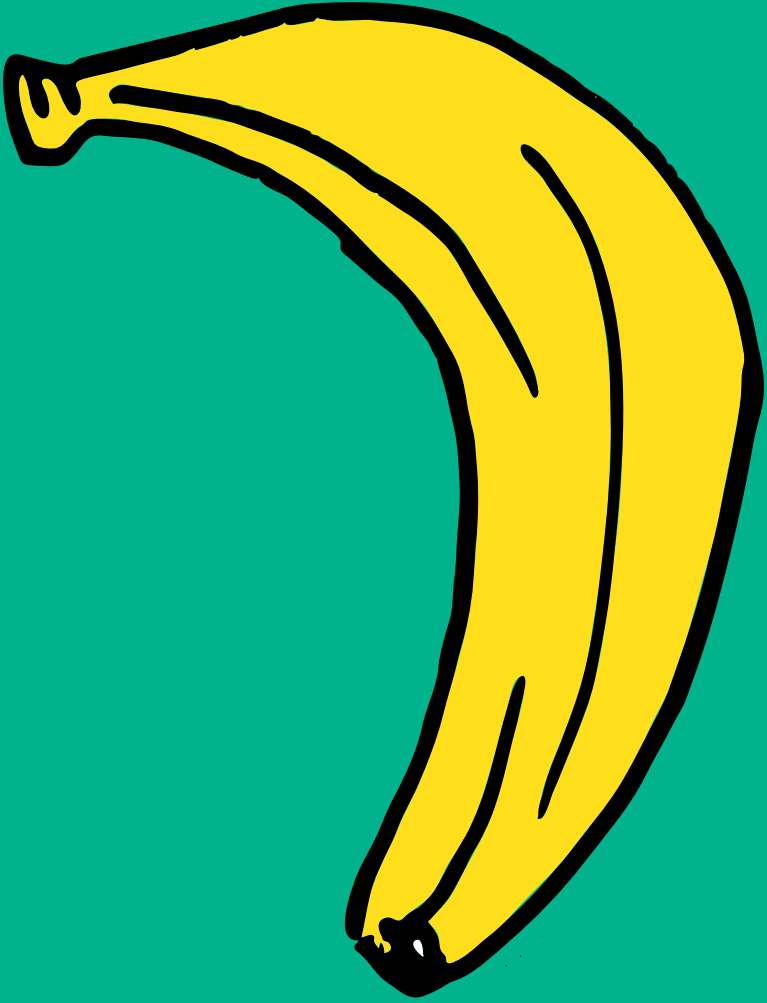






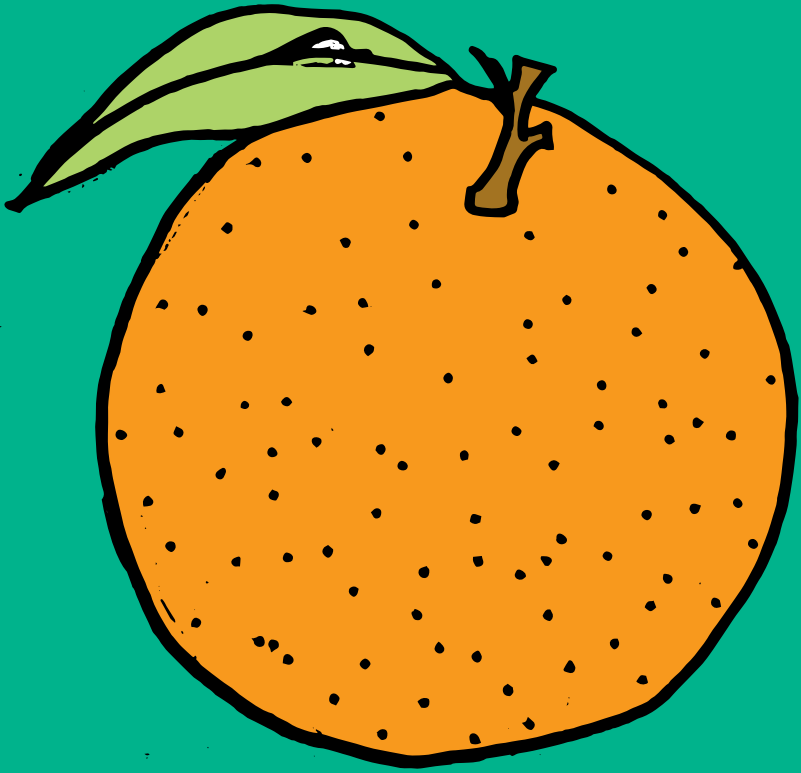


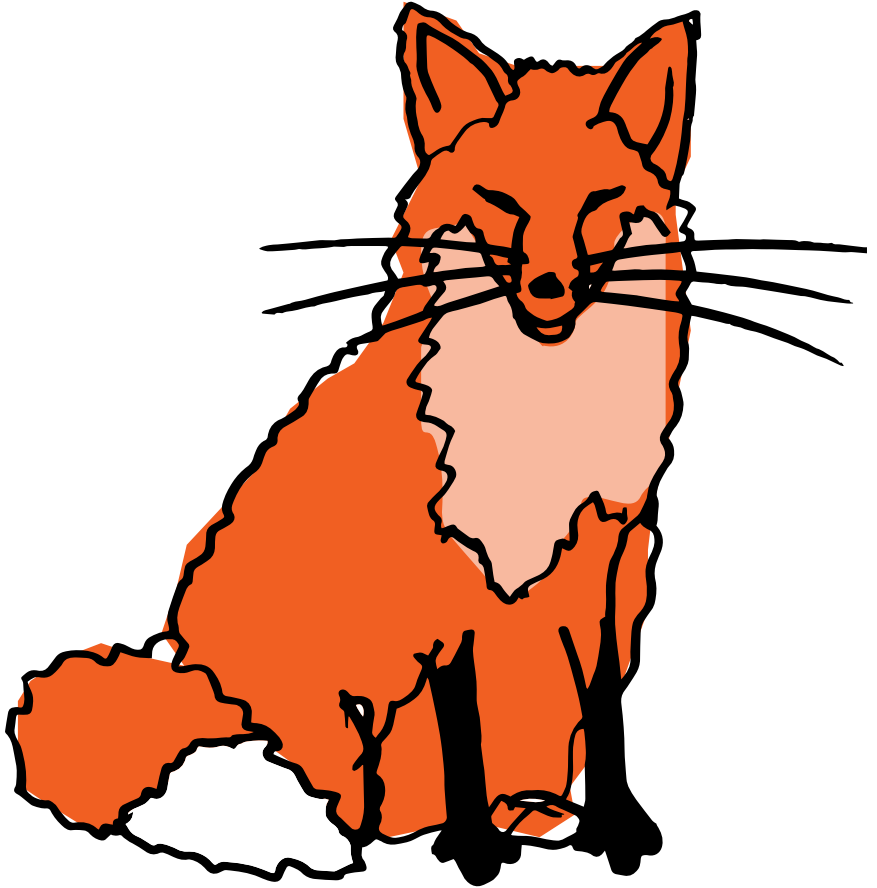


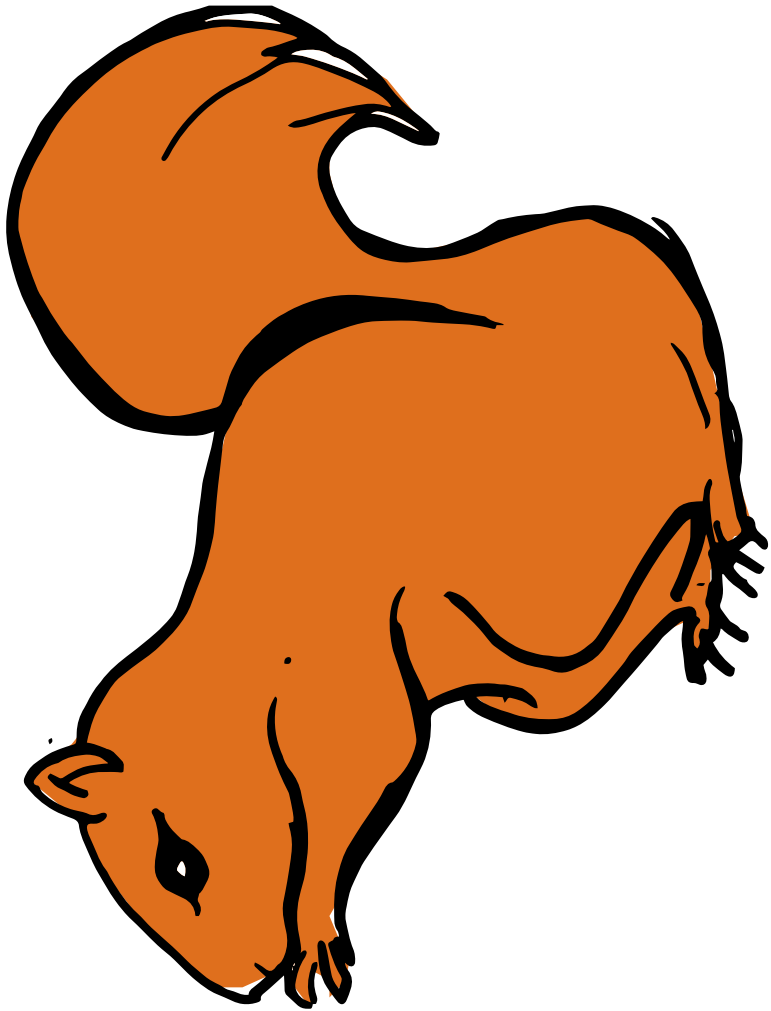






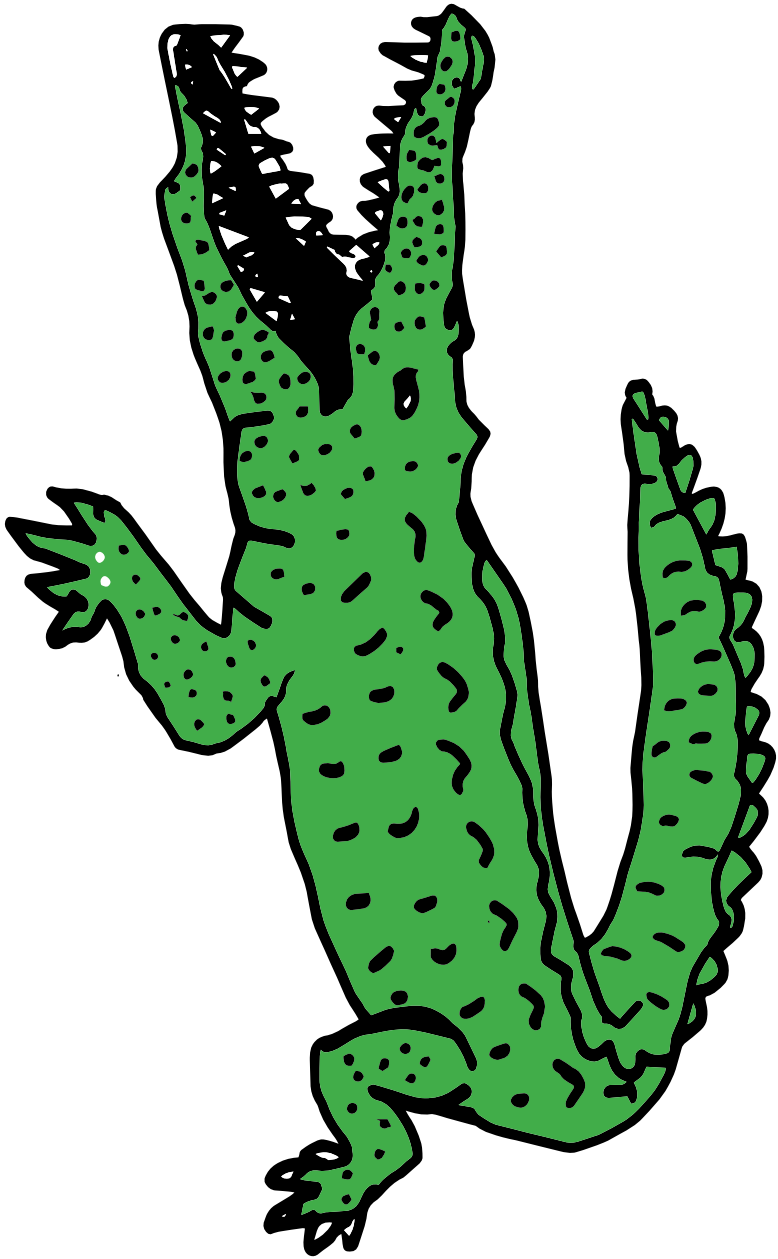


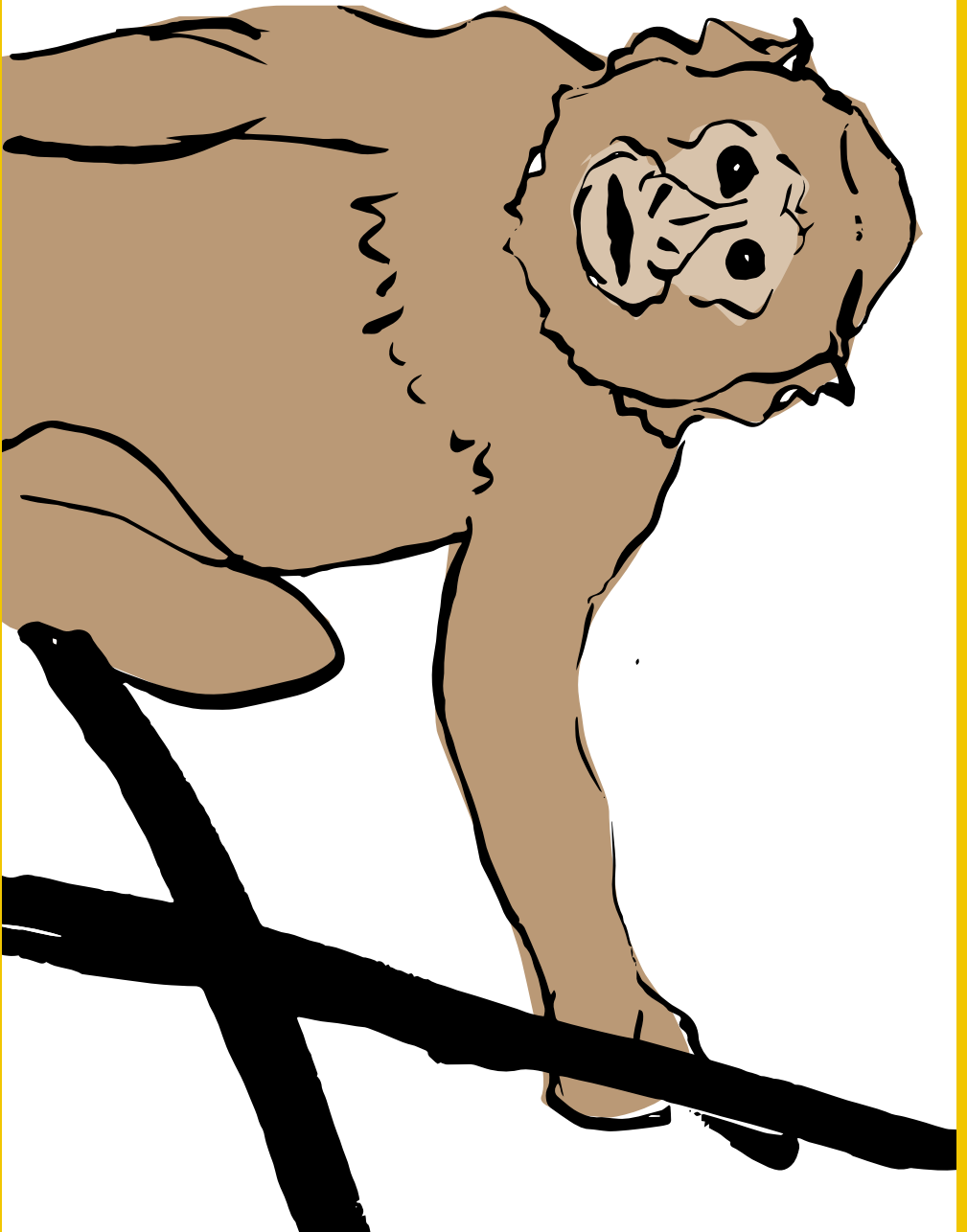




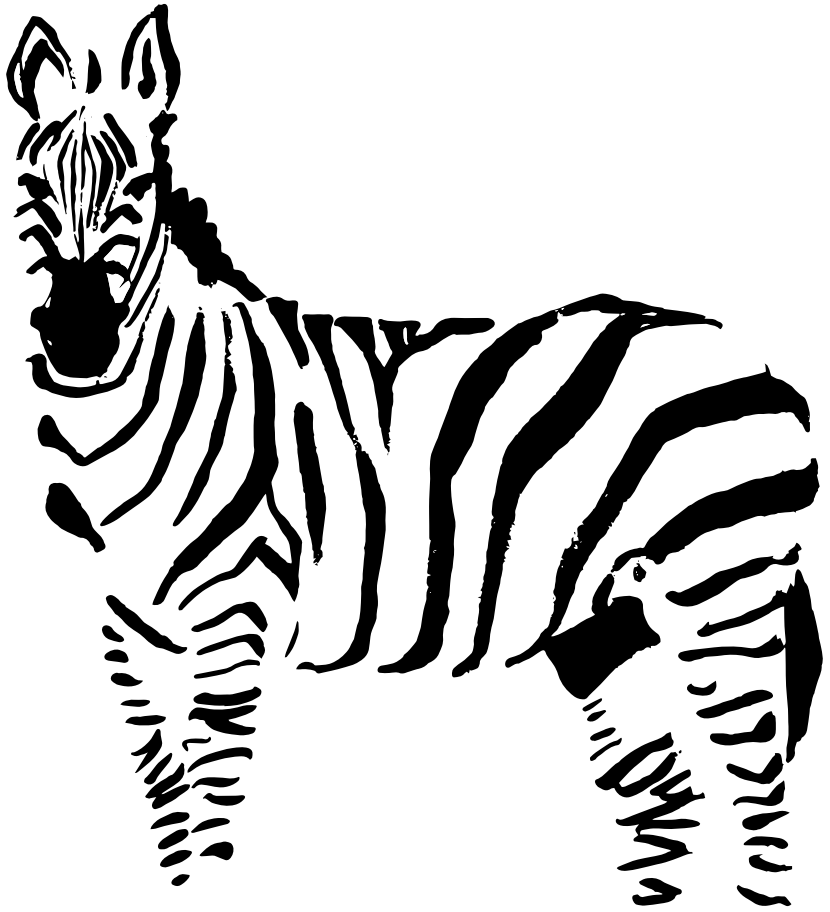




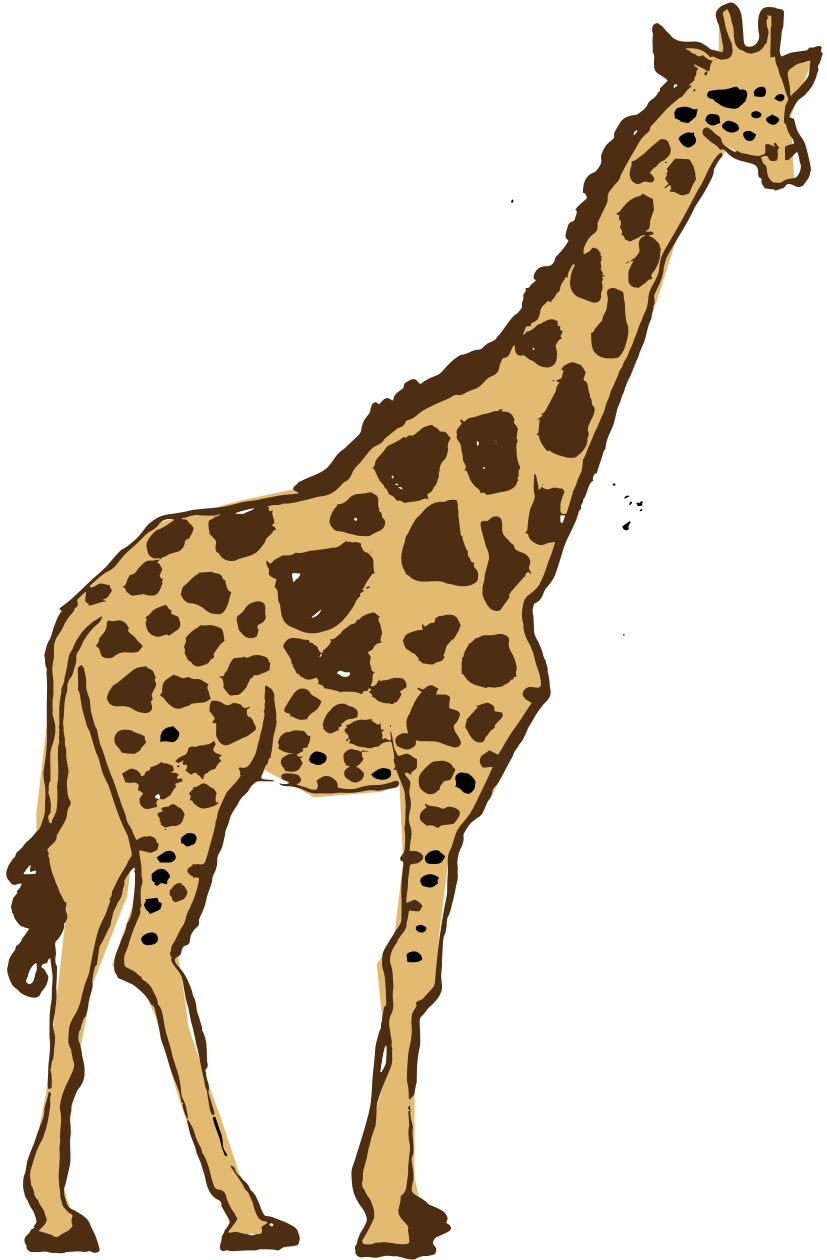




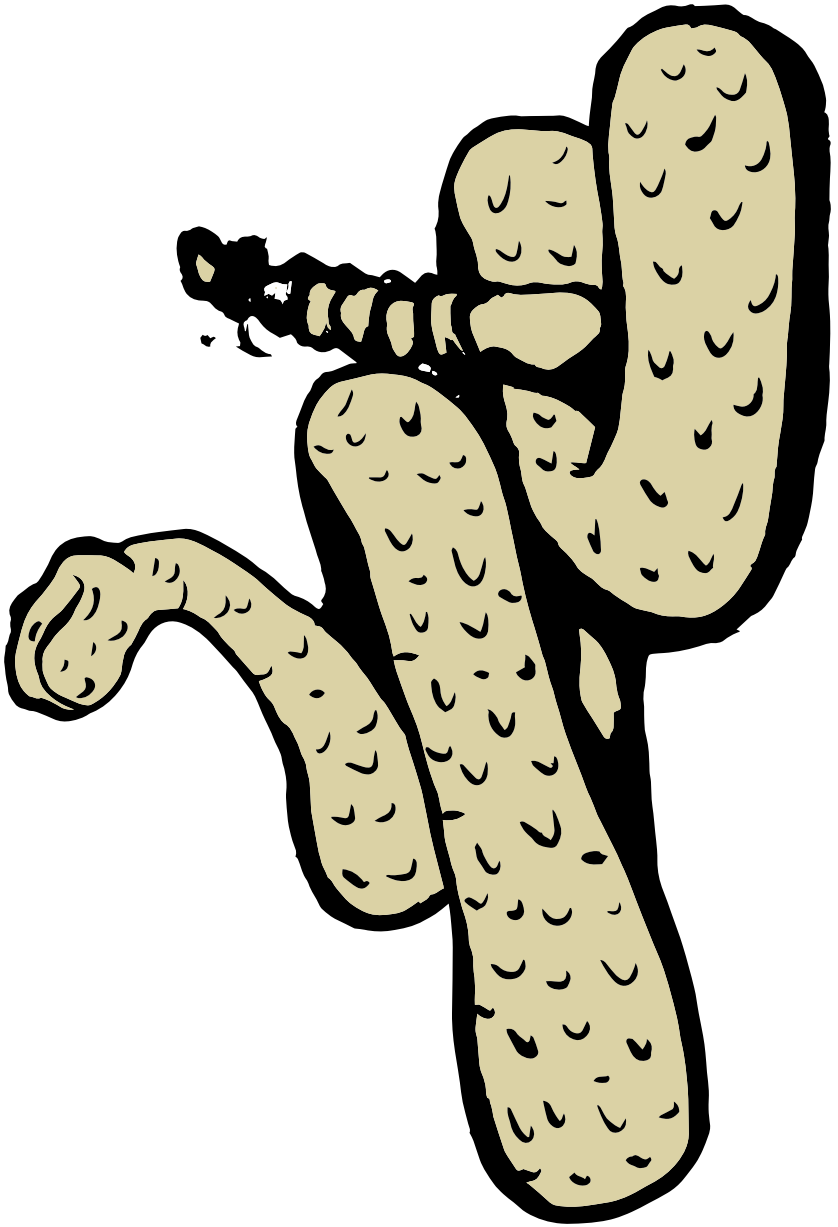






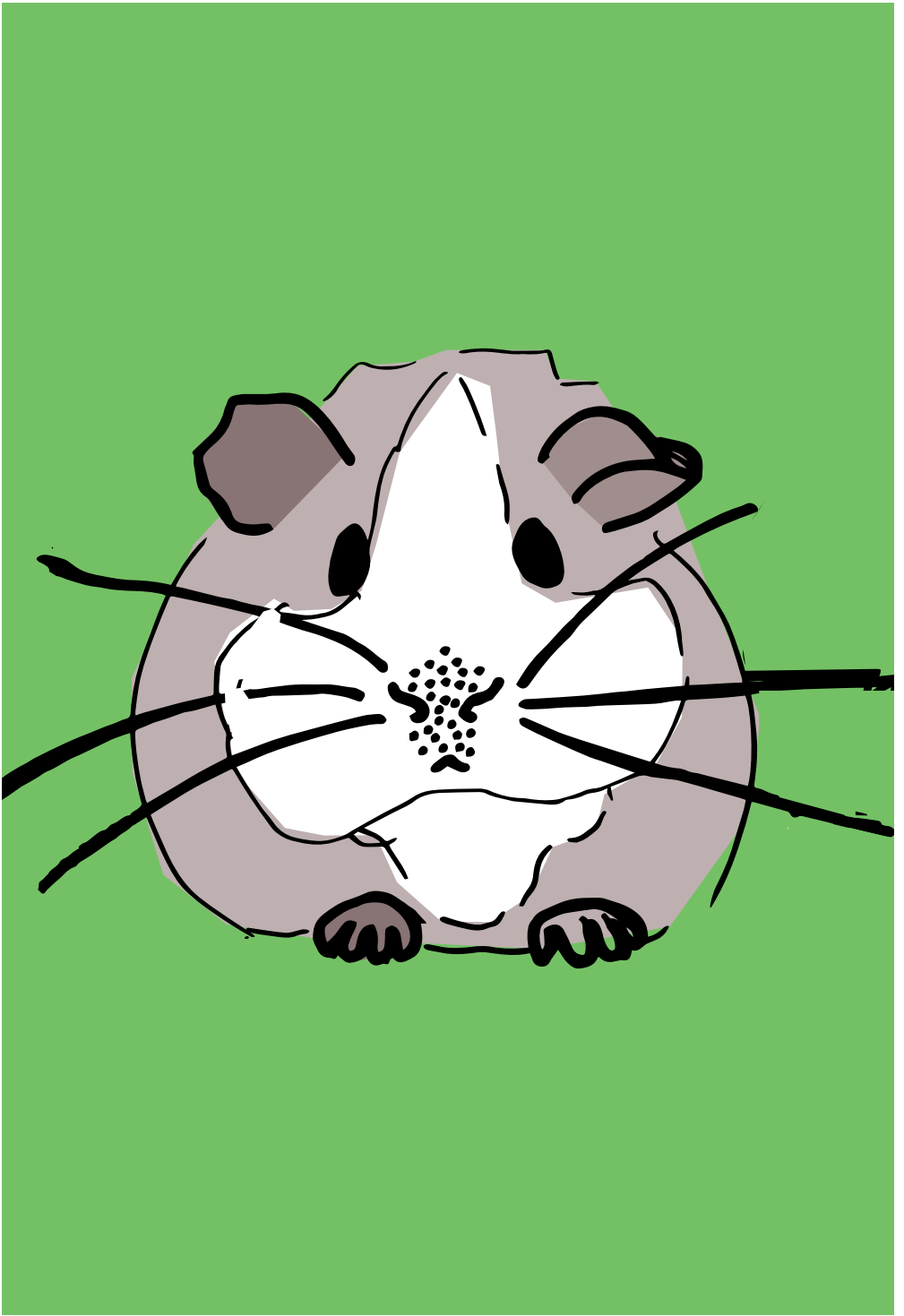




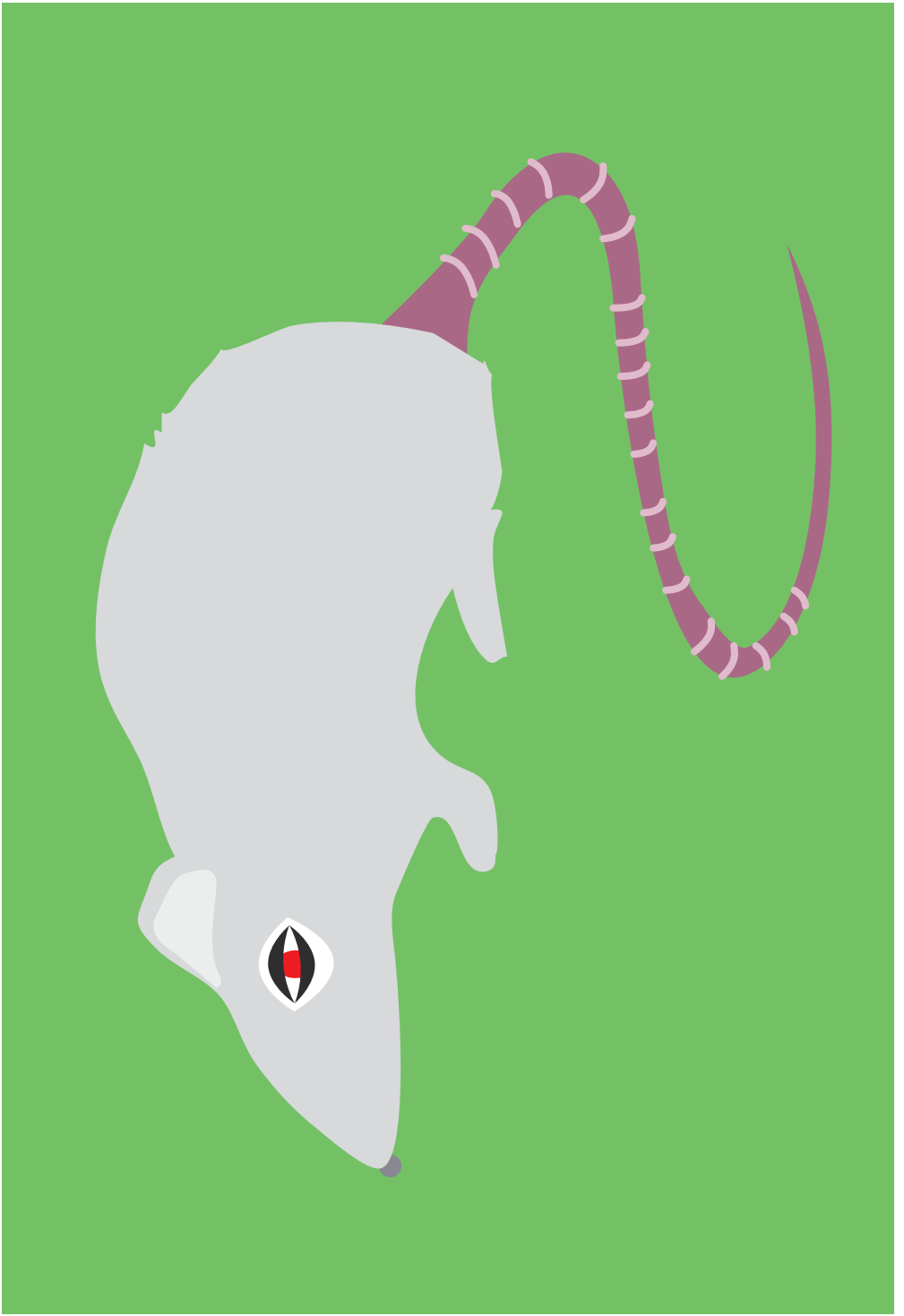




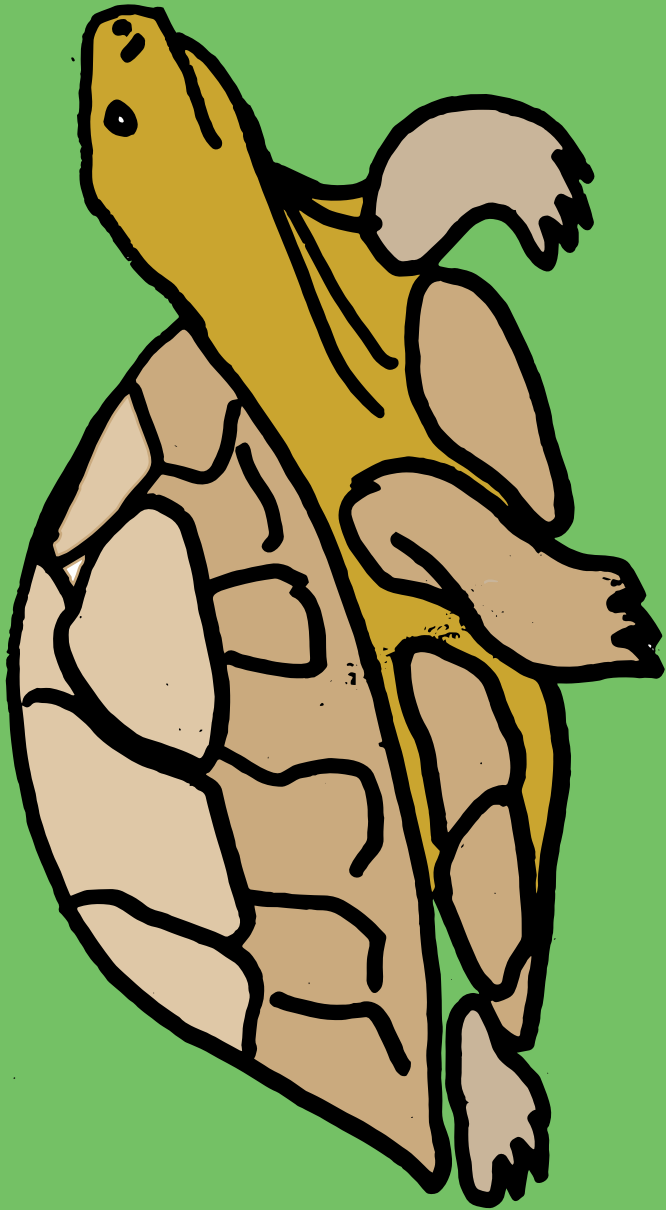


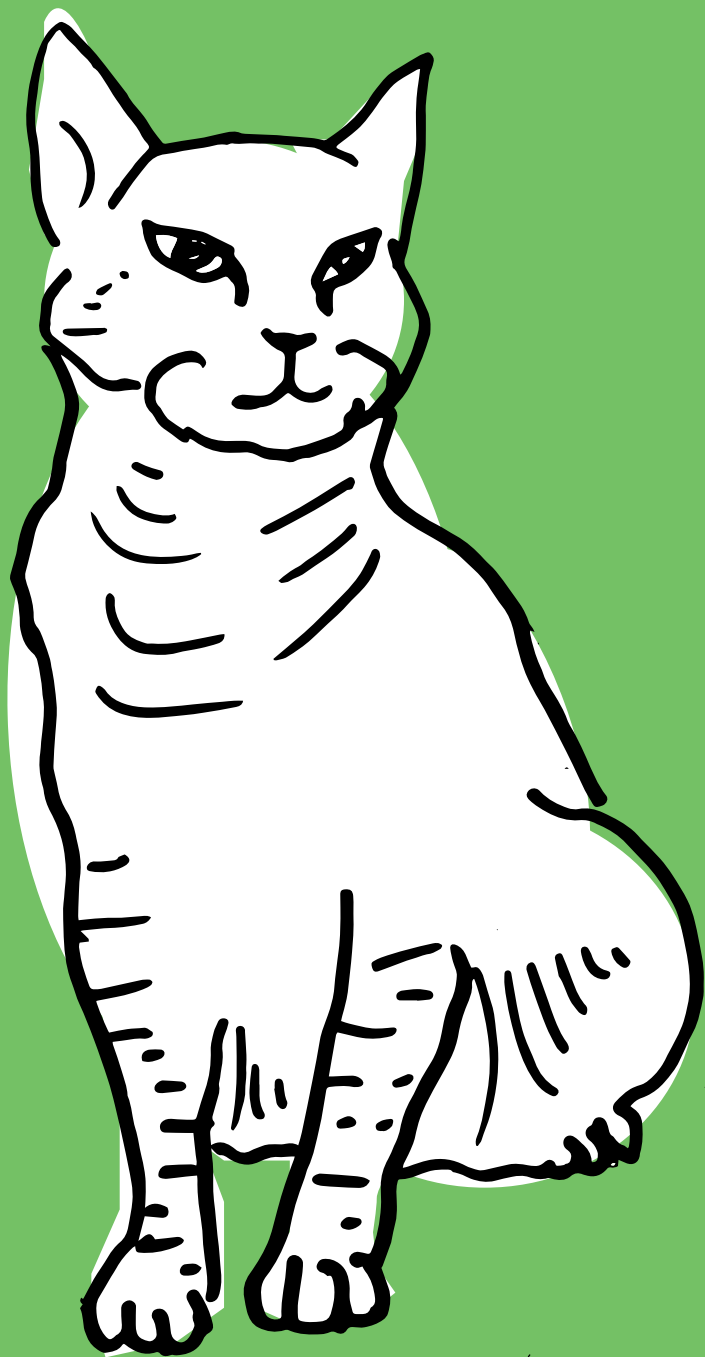






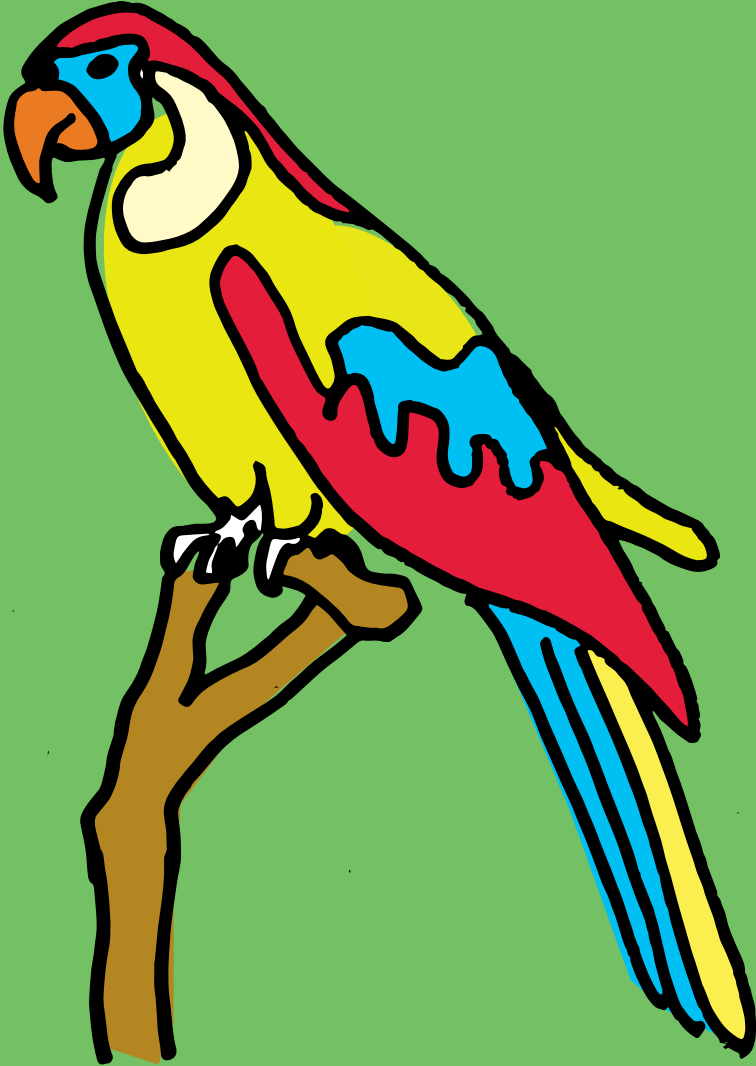


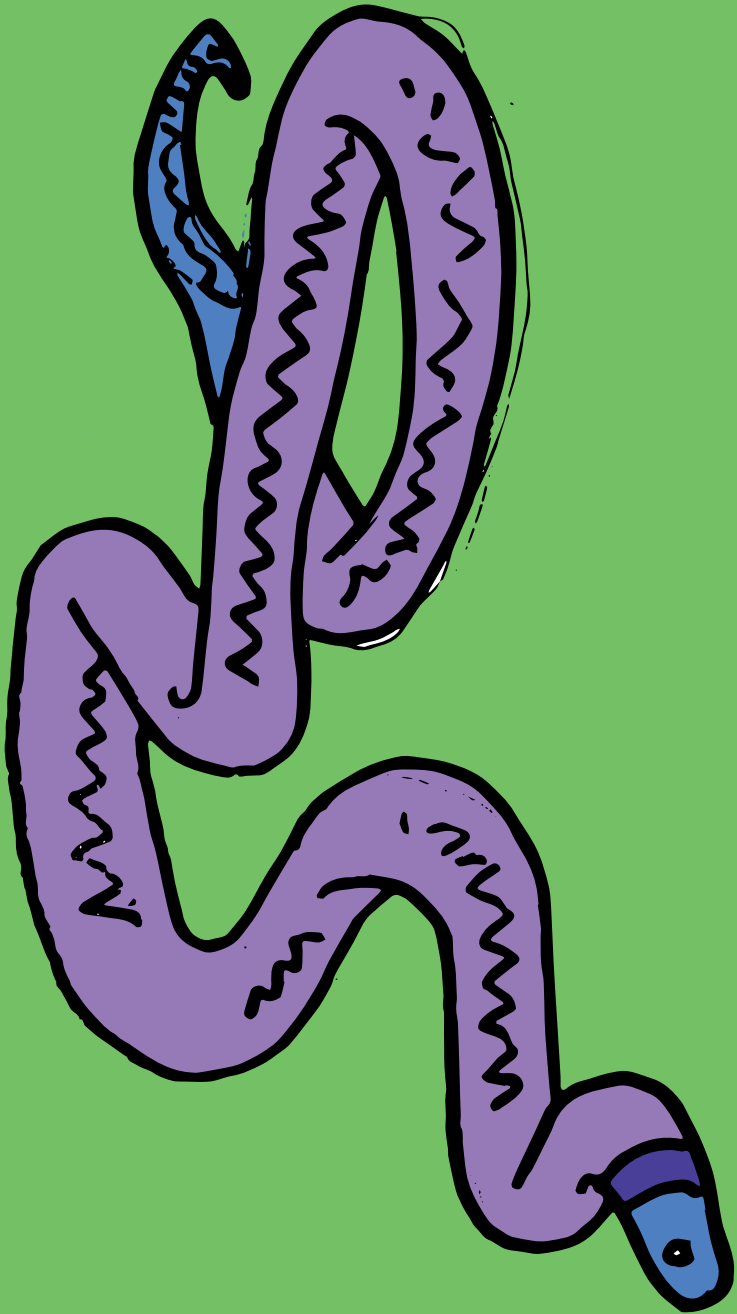


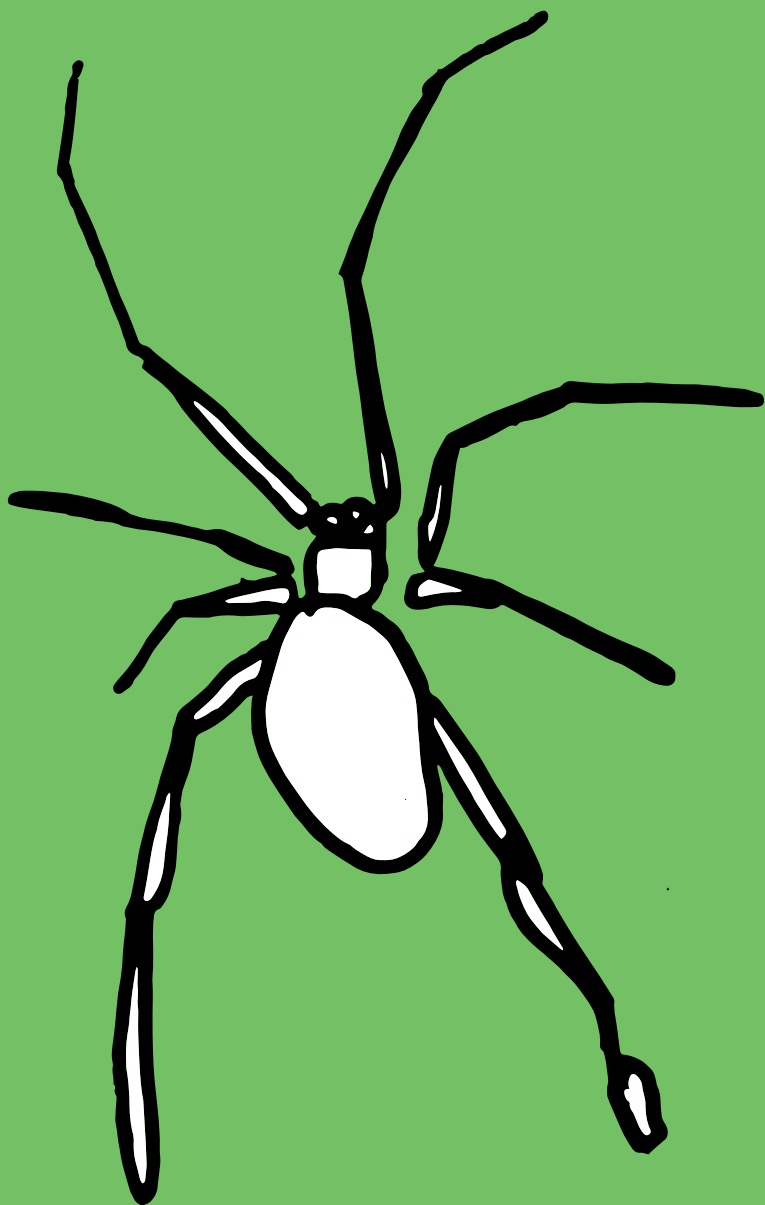










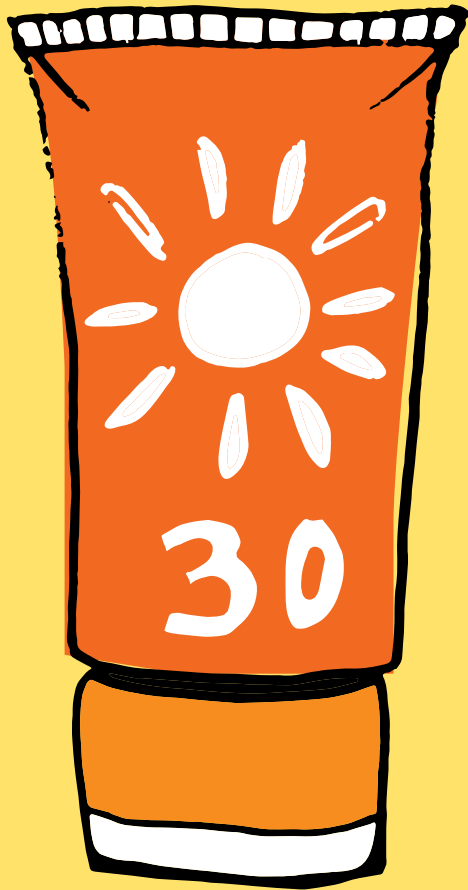




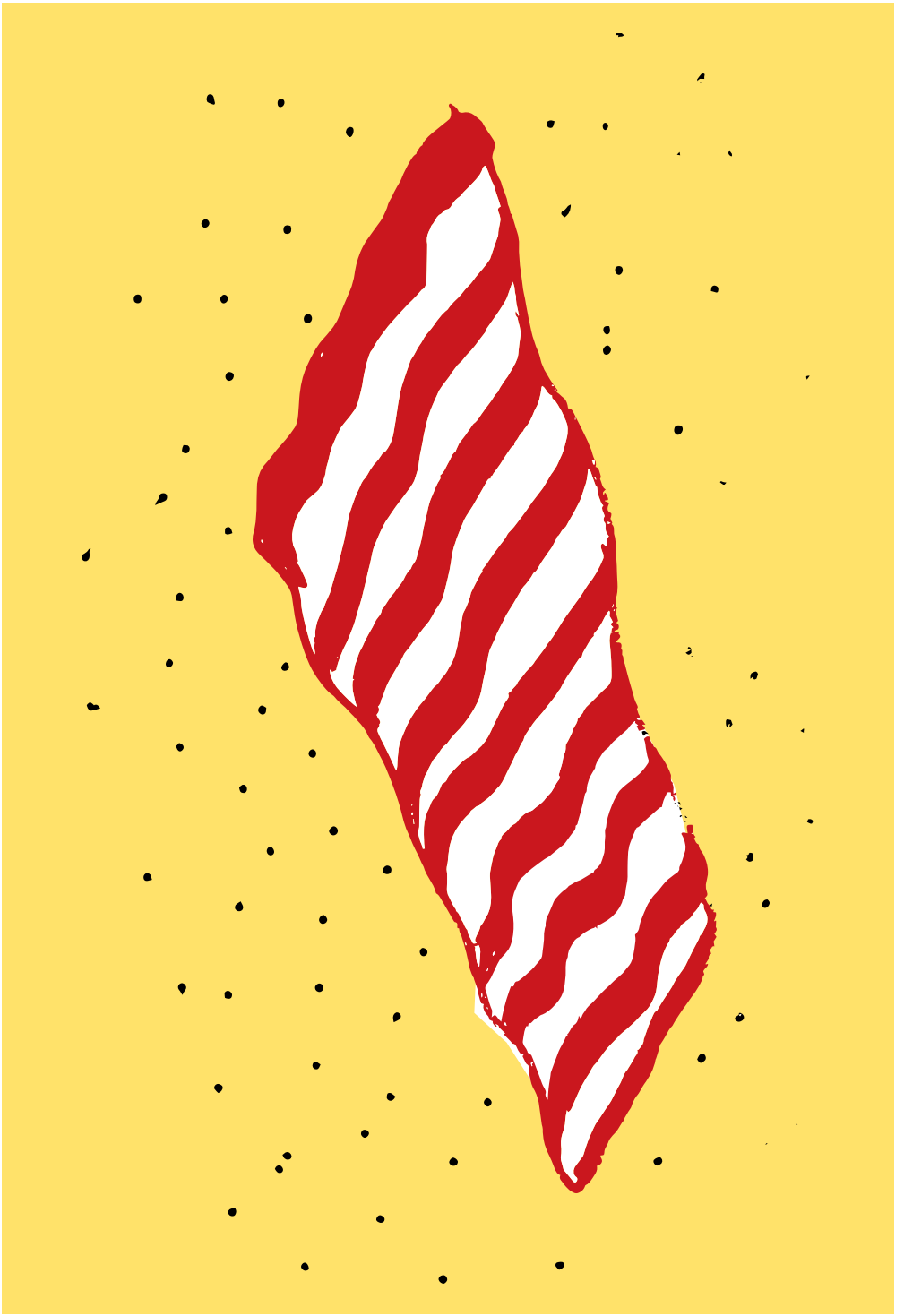
























Z Z Z







